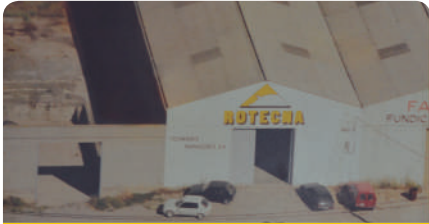




NEXT
LEVEL





Rotecna is born, dedicated to the manufacturing and commercialization of equipment for pig farms.

1991



We implement plastic injection to our production process of our products.

1994



We are the first company to make a feeder for finishers in plastic injection.

1994



Our exports exceed our national. Nowadays 70% of our sales are made outside Spain.

2001



We add the electronic feeding systems to our product range.

2003



We implement a new management system to improve the efficiency of our storage and shipping processes.

2006



We create our Research and Development Department to promote the launch of new products developed entirely by the company's own engineers.

1996



We expand our facilities: 17,000 m² of surface area, 7,000 of which are used for production and offices.

1998



Rotecna is the first company in the pig sector to obtain ISO-9001 quality certification, in 1999.

1999



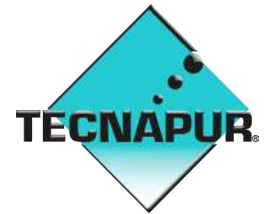
We acquire the first injection machine of over 2,000 tons for the design, development and manufacture of large-scale products.

2013



Further expansion of our facilities: 53,000 m² of surface area, 18,000 m² of which are used for production and offices.

2014



We launch a new product line called Tecnapur focused on the treatment of livestock manure.

2016





QUALITY

1st company in the sector to be ISO 9001 certified, in 1991. Quality is the methodology that has ensured loyalty among our customers.



RESEARCH

We work with farmers and institutions all around the world to develop and test our products and maximize their profitability.



DESIGN

Being the #1 in innovation has made us the most inspiring and followed company of the industry. We provide the best solutions to increase profits in the sector.



INVESTMENT

The fostering of human talent and acquisition of latest generation equipment guarantees that our customers are competitive and that we are the market leaders.



MANUFACTURING

15 injection machines of up to 2,300 tons, 9.4 million units injected a year, more than 7,000 tons of different plastics consumed a year.



SOLUTIONS

In order to increase the value we deliver to our clients, our technicians and experts offer personalized technical and commercial guidance.



DISTRIBUTION

Present in more than 85 countries. More than 1,500 trucks and containers dispatched every year. Computerized logistic control system.



DISSEMINATION

The only company in the sector that publishes three magazines to keep our customers up to date with the latest news.



NEXT LEVEL

In order to continue increase our customers profits we need to constantly evolve and invest in new products and solutions that are increasingly more innovative and efficient.

This philosophy has won us the confidence of farmers all around the world. In order to maintain and expand this leading position, we must always be willing to go further, to expand our horizons, and not think twice about taking things to **the next level**.



Feeders

Dispensers & EFS

Conveying Systems

Consumables & anti-stress

Pans

Drinkers & VRH

GESTATION



TR2 page 10



SOW BOWL page 19



DISPENSERS page 22



CORELESS AUGER SYSTEM page 26

ANTI-STRESS CHAIN page 27



VRH-3 page 32



SWING DRINKER MAXI page 33



FEEDING BALL page 18



CHAIN & DISK SYSTEM page 24



GROW FEEDER ANTI-STRESS page 27

FARROWING



SOW FEEDER page 19



DISPENSERS page 22



CORELESS AUGER SYSTEM page 26



SPLAYLEGSTOP page 27



PANS FOR PIGLETS page 28



VRH-3 page 32



EASY DRINKER MINI page 32



FEEDING BALL page 18



SOW BOWL page 19



DOSITRONIC page 20



CHAIN & DISK SYSTEM page 24

WEANING



GROW FEEDER MINI page 17



TR-5 page 16



DISPENSERS page 22



CORELESS AUGER SYSTEM page 26



MAXI HOPPER PAN page 30



MAXI PAN page 31



MAXITAINER page 30



ACCESSORIES page 31



SWING DRINKER page 33



EASY DRINKER MIMI page 32



MAXI WET SET page 33

FINISHING & WEAN TO FINISH



SF3D page 12



TR3D page 11



DISPENSERS page 22



CORELESS AUGER SYSTEM page 26

ANTI-STRESS page 27



(WEAN TO FINISH)



MAXI HOPPER PAN page 30



SWING DRINKER page 33



SWING DRINKER MAXI page 33



GROW FEEDER MAXI page 8



TR2 page 10



CHAIN & DISK SYSTEM page 24



GROW FEEDER ANTI-STRESS page 27

TR-5 page 16



SWING R-3 page 14

Ni-2

Slats & Heated Plates

Panels & PVC



FAST DOOR KIT
page 49



PANELS, BRACKETS
AND PROFILES
page 48

FOR ALL PHASES

CHIMNEYS



CHIMNEYS
page 54



NI-2 MOBILE
page 34



HEATED PLATES
electric / water
page 36-37



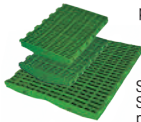
TRAP-SLAT
page 43



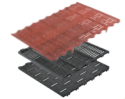
PVC DIVIDERS, PROFILES,
BRACKETS & ACCESSORIES
page 52-53



NI-2 CORNER
page 35



SOW
SLATS
page 40



CAST IRON SLATS
page 44



ACCESSORIES NI-2
page 35



COMPLEMENTARY
SLATS
page 42

SILOMETRIC

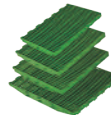


SILOMETRIC
page 55

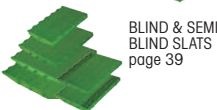


HEATED PLATES
electric / water
page 36-37

WEANER
SLATS
page 38



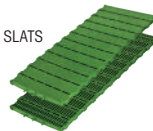
PVC DIVIDERS, PROFILES,
BRACKETS & ACCESSORIES
page 52-53



BLIND & SEMI-
BLIND SLATS
page 39



120x50 SLATS
page 41



TECNAPUR



SOLID-LIQUID
SEPARATOR
page 56



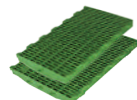
AGITATOR
page 57



HEATED PLATES
electric / water
page 36-37



FAST DOOR KIT
page 49



WEAN TO
FINISH SLATS
page 41



PANELS, BRACKETS
AND PROFILES
page 48

GROW FEEDER MAXI



18100000	GROW FEEDER MAXI
18101000	GROW FEEDER MAXI WITHOUT WATER KIT
18103000	GROW FEEDER MAXI WITH HOPPER SLIDE
18104000	GROW FEEDER MAXI WITH HOPPER SLIDE WITHOUT WATER KIT



'Ad libitum' feeder with swing mechanism for fattening pigs.

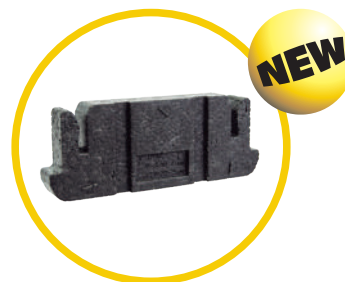
With front access and adjustable water flow, the Grow Feeder Maxi offers the possibility of adding water to the feed in the pan itself, which increases the animals' speed of intake and consumption.

In 1994, the Grow Feeder Maxi was the world's first feeder for pigs to be manufactured by injection.

22100001	GROW FEEDER MAXI LID
----------	----------------------



22500001	SHUTTER FOR GROW FEEDER MAXI 21MM
22500002	SHUTTER FOR GROW FEEDER MAXI 25MM



TECHNICAL DATA:

GROW FEEDER MAXI	
Feeder capacity, l	60
Animal weight, kg	15-120
Suitable for	finishers
Feed	Wet / Dry
N° animals/feeder	10-15
Feeder outlets	1
Height, cm	108
Width, cm	37
Depth, cm	34
Plate access, cm	14
Weight, kg	8.6
Adjustable positions of regulation	13



Special anti-condensation design.
Protected water pipe.



Longer mechanism.
Bigger lever.



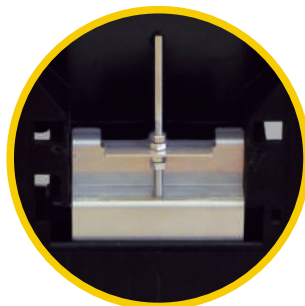
Easy-to-open mechanism for better
access.

ADVANTAGES:

- Maximizes consumption and minimizes wastage of feed and water.
- The smallest animals adapt quickly.
- Easy-to-access hopper outlet for cleaning.
- Compact and resistant.
- Rounded pan without corners where feed can gather.
- Tilted nipple, which can be fitted to both sides of the pan.
- Quick, easy and precise setting.
- Easily activated swing mechanism that simulates natural rooting action.
- Mechanism with opening system.
- High capacity hopper designed to facilitate flow of feed.



GROW FEEDER MAXI STOP



18100501	GROW FEEDER MAXI STOP
18101101	GROW FEEDER MAXI STOP WITHOUT WATER KIT
18103101	GROW FEEDER MAXI STOP WITH HOPPER SLIDE
18104101	GROW FEEDER MAXI STOP WITH HOPPER SLIDE WITHOUT WATER KIT

The "Stop" system guarantees the animals' fasting when required, even though the feeder is full regardless of feed particle size.

ADVANTAGES:

- Greater flexibility for animals' fasting.
- Total closure of the feeder without emptying it.
- Complete blockage of the feed mechanism, regardless of feed particle size.
- Easy-to-use with one hand.

TR2

18200000 TR2 FINISHER FEEDER



'Ad libitum' feeder with slide gate mechanism for fattening pigs.

With front access, the TR2 is a feed hopper, without the option of adding water to the trough. Dry feeding is simple and easy to manage.

The TR-2 is the first of its kind to be made by plastic injection.



TR2 of feeder lid.



SANDWICH slide gate system for TR2 and TR3D feeders.



Design of the 'V' shaped trough. Allows 2 large pigs to eat at the same time.

ADVANTAGES OF TR2 AND TR3D:

- Maximizes consumption of feed and minimizes waste.
- The smallest animals adapt quickly.
- Compact and resistant.
- Rounded trough without corners where feed can gather.
- 'V' shaped trough so that animals can eat comfortably without competing.
- Quick, easy and precise setting.
- Protected setting slide gate.
- High capacity hopper designed to facilitate flow of feed.

TECHNICAL DATA:

FEEDER	TR2	TR3D
Feeder capacity, l	130	330
Animal weight, kg	18-120	15-160
Suitable for	finishing & gestation	finishing
Feed	dry	dry
Nº animals / feeder	20-22	60-72
Height, cm	110	107,4
Width, cm	60	130
Depth, cm	40	73,3
Plate access, cm	16	13,6
Feeder outlets	2	6
Outlets width, cm	28+28	38
Weight, kg	13,2	-
Adjustable positions of regulation	12	10

TR3D

22300001 TR3D FEEDER



'Ad libitum' feeder with slide gate mechanism for fattening pigs.

The TR3D is an 'ad libitum' fattening feeder with slide gate and adjustable flow that can be accessed from both sides.

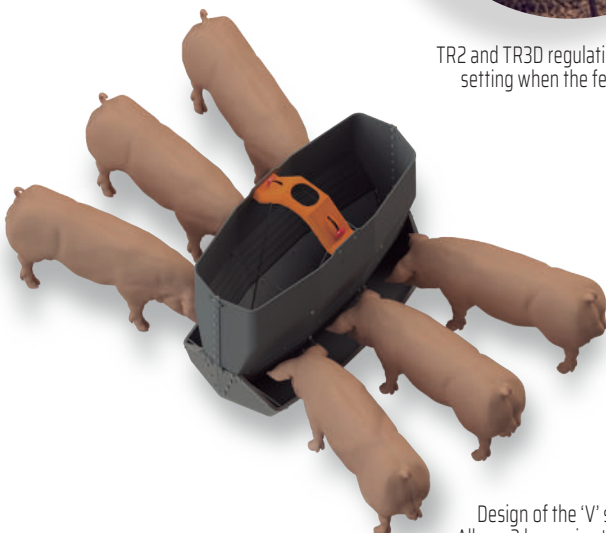
Designed to feed fattening animals with dry feed.



TR2 and TR3D regulation system, for setting when the feeder is full.

SIDE AND FLOOR BRACKETS for TR3D

22300012	TR3D SIDE BRACKET
22300013	TR3D FLOOR BRACKET



Design of the 'V' shaped trough. Allows 3 large pigs to eat at the same time on each side.



SF3D



20600000	SF3D WTF
20601000	SF3D FINISHING
20602000	SF3D FINISHING WITHOUT WATER



Highly accurate and secure settings system with 70 points.



The VRH-3 valve can be fitted on all SF3D models.

'Ad libitum' feeder with telescopic shelf mechanism for weaned and fattening pigs.

The SF3D WTF is a moving shelf feeder accesable from both sides with adjustable flow system.

Can be used for recently weaned piglets up to fatteners, it is a dry feed feeder with the option of adding water to the trough itself, which increases the speed of intake and consumption.

TECHNICAL DATA:

FEEDER	SF3D WTF	SF3D FINISHING
Feeder capacity, l	246	246
Animal weight, kg	6-160	15-160
Suitable for	wean to finish	finishing
Feed	dry/wet	dry/wet
N° animals / feeder	70 - 90	70 - 90
Height, cm	100	100
Width, cm	120	120
Depth, cm	56	56
Plate access, cm	12	12
Feeder outlets	6	6
Outlets width, cm	38	38
Weight, kg	55	55
Adjustable positions of regulation	70 points	70 points

ADVANTAGES:

- Maximizes consumption and minimizes wastage of feed and water.
- A constant level of water in one of the central troughs helps the smallest animals to adapt.
- Easy-to-access feeder outlet for cleaning.
- Compact and resistant.
- Three independent rounded troughs without corners and completely accesable by the animals avoiding feed to gather.
- Animals can eat dry feed directly from the tray or it can be mixed with water in the trough.
- Wide feeding space so that animals can eat comfortably without competing no matter how large they are.
- Double water option with one nipple per trough or water level valve kit.
- Easy and precise setting with option of activation by electric screwdriver.
- Option of four-position telescopic mechanism to adapt the height of the shelf to the size of the animals.
- Easily activated moving shelf mechanism that simulates natural rooting action.
- High capacity feeder designed to facilitate flow of feed.

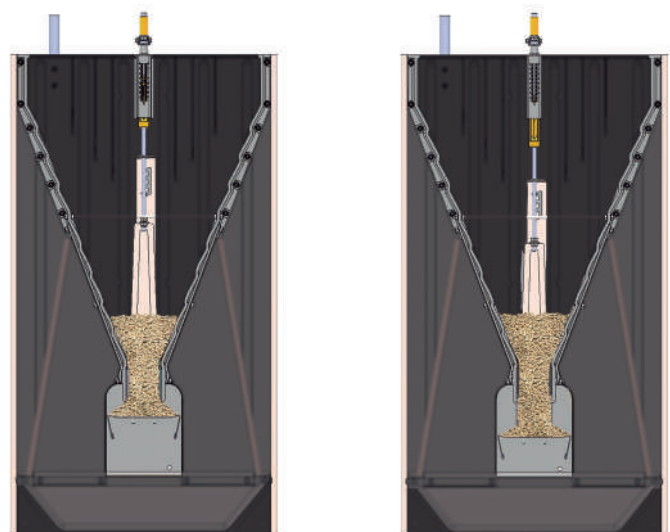


SIDE BRACKETS FOR ATTACHMENT TO PANELS

18400051	SF3D SIDE BRACKETS
20600803	SF3D BRACKET KIT VALVE



4 POSITION TELESCOPIC SHELF



MAXIMUM HEIGHT

MINIMUM HEIGHT

Inbuilt telescopic without removable parts.

SWING R3



16000000	SWING R3 DUO
16010000	SWING R3 WET
17313000	WEANER SWING R3 MIX

17311000	SWING R3 TUBE (POLYMER)
17303000	WEANER SWING R3 TUBE
17305000	GROW SWING R3 TUBE



DUO



WET



TUBE
POLYMER

Greater efficiency for weaning, fattening and wean to finish pigs.

Swing R3 models are the result of the continuous introduction of technical improvements.

TECHNICAL DATA:

TECHNICAL DATA	DUO	WET	TUBE		MIX
	WEANING, FINISHING & WEAN TO FINISH		FINISHING	WEANING	
Feeder capacity, l	100				
Animal weight, kg	6-120		6-120	6-30	
Suitable for	weaning, finishing & 'wean to finish'		finishing	weaning	
Feed	dry-wet	wet	dry		wet
No. of animals/feeder	30-50				
Filling height, cm	125 (slanted loading inlet)				
Max. feeder diameter, cm	57 (maximum)				
Min. feeder diameter, cm	14 (minimum)				
Pan measurements, cm	55x45x10+3		70x50x12	70x35x8	
Feed delivery system	pendulum		tube		pendulum
No. of nipples	2 (lateral)				



24 settings.



Slanted hopper gate.



"Monoblock" design.



Two feed delivery systems: pendulum and pipe.



The wide variety of troughs makes the Swing R3 range of feeders the most versatile on the market.



**TUBE
FINISHER**



**TUBE
WEANER**



**MIX
WEANER**

ADVANTAGES:

- Maximizes consumption and minimizes wastage of feed and water.
- A constant water level in the side drinkers of the pan helps smaller animals to adapt more quickly.
- Compact and resistant.
- Quick, easy and precise setting.
- Mechanism separated from the water to prevent blockage due to moisture.
- 'Monoblock' construction.
- Feeder designed to improve flow of feed.
- Upperhopper gate slanted to one side for easier manual loading.

SWING R3 BRACKETS

16000049 SWING R3 BRACKETS

PANS	TUBE WEANER	TUBE FINISHER	TUBE POLYMER	WET	DUO	MIX
STAINLESS STEEL	✓	✓		✓	✓	✓
POLYMER			✓			
MIX 1 LEVEL				✓		✓
DRY 2 LEVELS	✓	✓	✓		✓	
WEANING	✓		✓	✓	✓	✓
FINISHER		✓	✓	✓	✓	
WTF		✓	✓	✓	✓	

(*) Comparative table showing the features of the pans of 6 models of the Swing R3 feeders range.



Swing R3 feeder floor brackets are designed to extend feet to be installed in concrete slats.

TR5

01100005	TR5 WEANER FEEDER
22400001	TR5 / TR4 LID



TR5 and TR4 feeder lid



TR5

'Ad libitum' feeder with slide gate mechanism for weaned pigs.

The TR5 and TR4 are 'ad libitum' feeders with slide gate and adjustable flow with front access for feeding recently weaned animals with dry feed.

ADVANTAGES OF TR5 and TR4:

- Maximizes consumption of feed and minimizes waste.
- The smallest animals adapt quickly.
- Compact and resistant.
- Rounded trough without corners where feed can gather.
- Trough with rim designed to prevent feed wastage.
- Quick, easy and precise setting.
- Slide gate with protected setting.
- Easy for animals to reach feed without the need to activate mechanisms.
- High capacity hopper designed to facilitate flow of feed.

TR SS BRACKET

TR50B17	TR SS BRACKET
---------	---------------



The ideal bracket for TR5 and TR4 feeders.



Empty left-overs feed.



Attach in a vertical position for cleaning.



Turn and attach upside down for drying.

- With the TR bracket, it is much easier for the farmer to thoroughly empty and clean the feeder.
- Full stainless-steel construction.

TR4

01100004 TR4 WEANER FEEDER



TR4

TECHNICAL DATA:

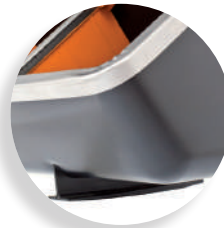
FEEDER	TR5	TR4
Feeder capacity, l	120	
Animal weight, kg	6 - 30	6-35
Suitable for	weaner	
Feed	dry	
N° animals / feeder	20 - 30	
Height, cm	67	
Width, cm	80	
Depth, cm	30	
Plate access, cm	11,5	
Feeder outlets	5	4
Outlets width, cm	15	18,7
Weight, kg	9,7	
Adjustable positions of regulation	12	



12 settings.
TR5 and TR4



"Sandwich" slide gate system.
TR5 and TR4



Feet. Feeder raised above the ground.
TR5 and TR4

GROW FEEDER MINI

GRO0A12	GROW FEEDER MINI
GRO0A13	GROW FEEDER MINI WITHOUT WATER KIT

The MINI Grow Feeder is the ideal option when transitioning from weaning to fattening.

ADVANTAGES:

- Feed intake is stimulated due to wet & dry feeding.
- Very good feed conversion..

TECHNICAL DATA:

GROW FEEDER MINI	
N° animals/feeder	10-15
Animales weight, kg	6-30
Feeder capacity, l	30
Height, cm	90
Diameter, cm	26



FEEDING BALL

2350100	FEEDING BALL (PLASTIC support)
2350200	FEEDING BALL (SS support)



'Ad libitum' feeder for sows in farrowing and gestation.

ADVANTAGES:

- Quick, easy and precise setting.
- Swinging ball mechanism with easily triggered appendage that simulates natural rooting action.
- The ball appendage prevents it from turning and getting the inside of the mechanism wet.
- Quick and easy disassembly system operated with a single hand.
- Maximizes consumption and minimizes wastage of feed and water.
- Access to fresh feed 24 hours a day
- Animals adapt quickly to its use.
- Does not block.

FEEDING BALL ACCESSORIES

13005011	Ø125 mm FEEDING BALL KIT FOR DISPENSER (8,5 L)
13005015	Ø80 mm FEEDING BALL KIT FOR DISPENSER (4 L)
13005010	HOPPER FOR FEEDING BALL (10 L)
21100001	LID FOR FEEDING BALL

ADVANTAGES:

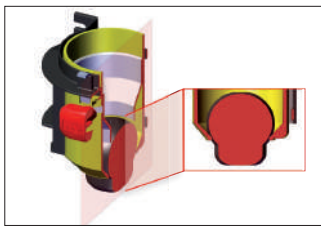
- Dispenser and/or feeder sets make it easier to check the level of feed consumption at any time of the day.
- Their perfect connection to the Feeding Ball makes them the ideal accessory for the required feed distribution system.
- The lid improves the maintenance of the organoleptic characteristics of the feed.



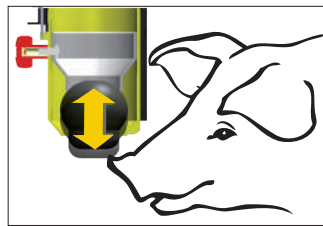
FEEDING BALL DISPENSER SETS



With the Feeding Ball dispenser, the animal can choose its own intake rate and access fresh feed 24 hours a day.



Design of the ball with appendage.



Animal chooses its own intake rate. Simulates natural rooting action.

TECHNICAL DATA:

FEEDING BALL	FEEDER for FB	DISPENSER SET Ø 125 Ø 80	
Suitable for	farrowing and post-weaning		
Support accessory	plastic	stainless steel	
Feed flow system	feeder	dispenser	
Feed	dry		
Capacity, l	10	8,5	4,0
Height, cm	56,5	54,5	70,0
Width, cm	39,3	-	-
Length, cm	20,5	-	-
Diameter, cm	-	12,5	8,0



Completely detachable

The Feeding Ball is installed over a trough where there may be a water level valve or nipple. Adding water to the feed increases the intake rate and the consumption of feed and water.

Can be installed under a dispenser to adjust the maximum daily dose.

SOW FEEDER

GRO0A42	SOW FEEDER
GRO0A43	SOW FEEDER WITHOUT WATER KIT



ADVANTAGES:

- Maximizes consumption and minimizes wastage of feed and water.
- Access to fresh feed 24 hours a day.
- Animals adapt quickly to its use.
- Does not block.

TECHNICAL DATA:

SOW FEEDER	
Nº animals/feeder	1
Animals weight, kg	-
Feeder capacity, l	17
Height, cm	82
Diameter, cm	31

SOW BOWL

SOW0C10	SOW BOWL WITH 1 PROTECTION STRIP
SOW0C11	SOW BOWL WITH 2 PROTECTIONS STRIP



TECHNICAL DATA:

SOW BOWL	
Nº animals/bowl	1
Bowl capacity, l	15
Maximum height, cm	39
Minimum height, cm	16
Depth, cm	46
Width, cm	33

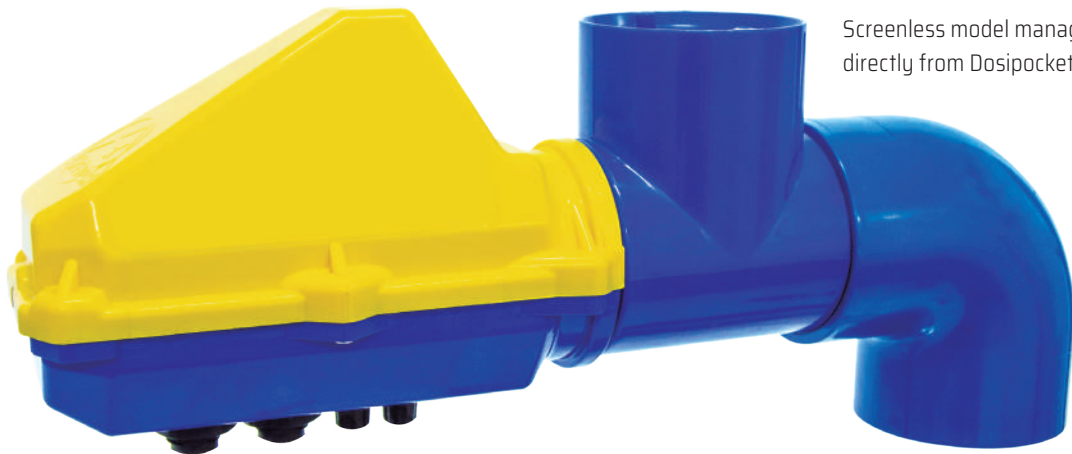
ADVANTAGES:

- Prevents wastage of feed and water.
- Resistant and durable.
- Versatile, with multiple applications and uses.

DOSITRONIC



19502100	DOSITRONIC
19502000	DOSITRONIC PLUS R (right)
19502060	DOSITRONIC PLUS L (left)



Screenless model managed directly from Dosipocket.

Electronic feeding system for farrowing sows

Dositronic is an electronic feeding system for farrowing sows that allows feeding strategies to be applied automatically.

Dositronic applies feeding curves that are assigned to each animal individually, dividing the daily ration into several intakes.

It has a sensor, which the sow has to trigger to be dispensed her ration, and a system of LED lights that instantaneously and intuitively indicate how the sow is eating and the feed level being applied, so the feed level can be reduced or increased by pressing a single button on the same device.



Dosipocket for access to management software.



Sensor.

MEAL HOPPER

21300000	MEAL HOPPER DOSITRONIC 55
21300010	MEAL HOPPER DOSITRONIC 60



Vibration system.



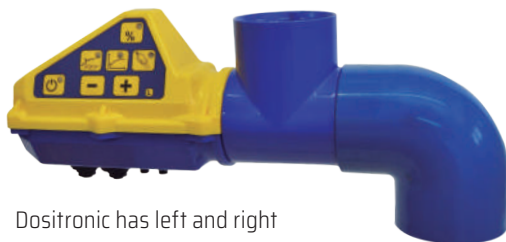
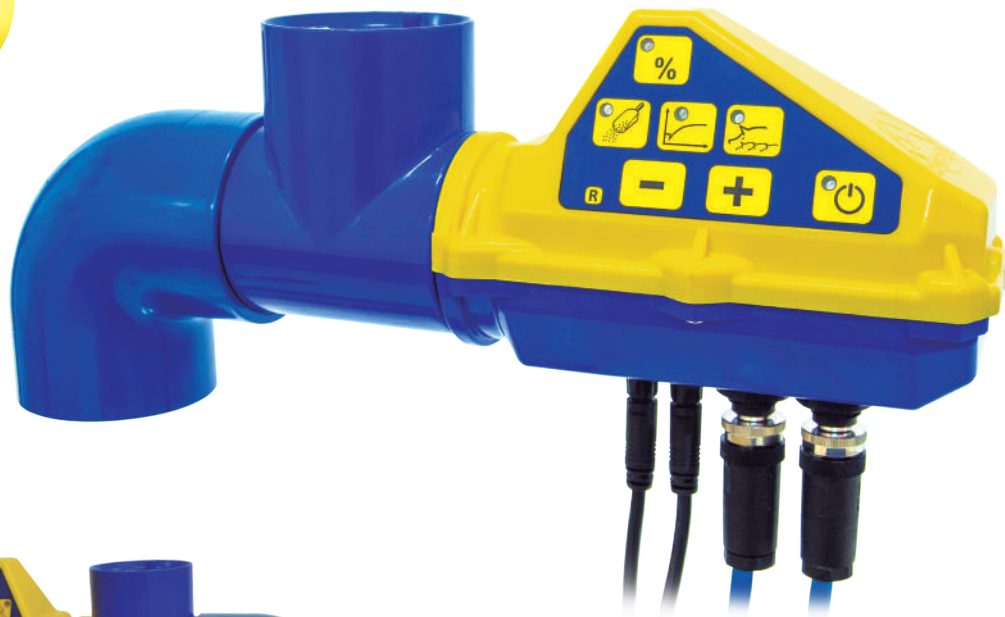
6L

DOSITRONIC DISPENSERS

19500050	FOUR DOSITRONIC
19500051	FIVE DOSITRONIC
20100400	SIX-D DOSITRONIC



Dositronic can be adapted to all Rotecna dispenser models.



Dositronic has left and right models.



ADVANTAGES:

- Maximizes the feed and water consumption of farrowing sows.
- Increased milk production significantly increases the number of weaned piglets per sow per year, while increasing their average weight and homogeneity.
- It improves the condition of sows at the end of the farrowing phase, which reduces the weaning-breeding period and increases the fertility, prolificacy and weight of the piglets in the next birth.
- Reduces feed wastage and feeding labour.
- Easy to install even in existing systems.
- Requires very little specialist training for everyday use.
- Highly reliable and accurate DC motor.
- Multiple installation options.
- Simple and intuitive operation.
- High capacity for analysis of feed consumption data.
- Option of dispensing water by electrovalve.



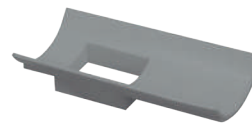
FIVE

18900000	FIVE 7L.
18901000	FIVE 7L. LINE END
18900010	FIVE ADAPTER LINE

Ball dispenser for gestation sows and heavy fattening pigs with restricted feed.

ADVANTAGES:

- Robust and durable.
- Excellent feed flow.
- Minimizes problems with wear of the ball rope.
- Easy adjustment.
- Excellent access for cleaning.
- Low transport cost.



LINE ADAPTER
Ø 75 mm
for FIVE and FOUR

FOUR

15900000	FOUR 7L
159FL000	FOUR 7L WITH CAPACITATIVE SENSOR
159FL001	FOUR 7L TONGUE SWITCH



ADVANTAGES:

- Stainless steel slide gate.
- Large opening for medication.
- User friendly operation.
- Functional.
- Robust.

TECHNICAL DATA:

DISPENSERS	CLUTCH		DOSIMATIC		SIMPLEX		FOUR	FIVE	SIX-D	SIX-S
Feeder capacity, L.	6	10	6	10	6	10	7	7	6	6
Height, cm	61,5	83,5	56,5	81,5	46,5	68,5	52,5	52,9	67,9	67,9
Diameter, cm	16,8	16,8	15,5	15,5	16,8	16,8	17,5	19,4	17,9	17,9
Suitable for	farrowing and gestation									

SIMPLEX

SIMOE30	SIMPLEX 6L
SIMOE31	SIMPLEX 6L LINE END
SIMOE32	SIMPLEX 10L
SIMOE34	SIMPLEX 10L LINE END

ADVANTAGES:

- Quick setting with one hand.
- Medication lid.
- Slide gate for opening, closing and medication.
- Record card clip.



LINE ADAPTER
Ø45 mm

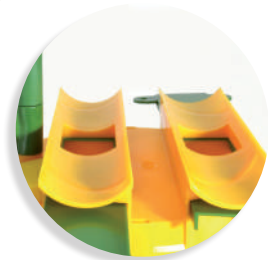


ADAPTASIMP SIMPLEX ADAPTER LINE

SIX-D y SIX-S



20100000	SIX-D
23200001	SIX-S



SIX-D



SIX-S

Six-D, the dispenser for twin feed lines.

ADVANTAGES:

- Used to dispense small amounts of feed, ideal for dispensing several rations a day.
- Clutch system saves feed and optimizes feeding.
- Can be used to easily and quickly choose between two different types of feed.

DOSIMATIC

MAT0E10	DOSIMATIC 6L
MAT0E11	DOSIMATIC 6L LINE END
MAT0E12	DOSIMATIC 10L
MAT0E13	DOSIMATIC 10L LINE END

ADVANTAGES:

- High precision settings.
- Used to dispense small amounts of feed.

CLUTCH

CLU0E20	CLUTCH 6L
CLU0E21	CLUTCH 6L LINE END
CLU0E22	CLUTCH 10L
CLU0E24	CLUTCH 10L LINE END



Your best ally for gestation and farrowing.

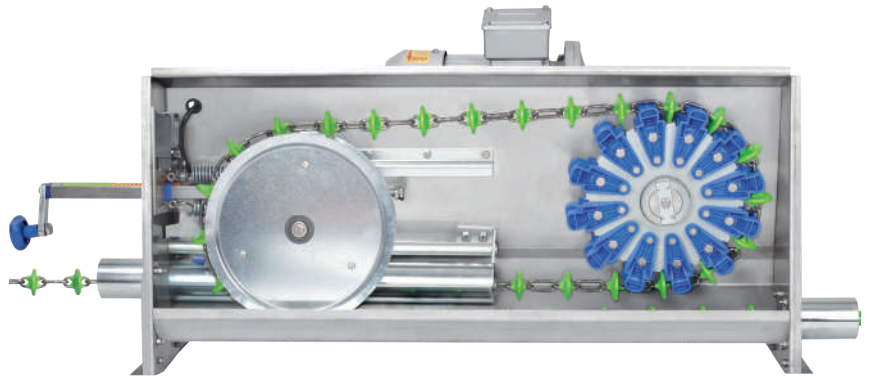
ADVANTAGES:

- Clutch system with optical signal. When activated it individually deactivates the feed flow.
- Precise and easy to adjust.
- Option to choose 2 types of feed. With a multi-phase system.
- Great interior visibility.
- Medication lid.
- Record card clip.



ADAPTADO60	DISPENSER OUTLET REDUCER TO 60 mm Ø
ADAPTADO63	DISPENSER OUTLET REDUCER TO 63 mm Ø

CHAIN & DISK SYSTEM



DRIVE UNIT

The drive unit has a drive pulley with independent teeth and shock absorbing system that increases the safety of the installation in case of jamming and the useful life of the chain by reducing tension and wear.

It has an external chain tensioning system and easy-to-adjust visor.



Shock absorbing teeth, extending the useful life of the chain.



Easy to control chain tensioning system with graduation scale.

CORNER

ARROY02	60 CORNER
ARROY01	50 CORNER



Pulleys that prevent feed from gathering.



Easy to open, no tools required.



- Ø 50 and Ø 60 mm corners.
- Special design that prevents feed from gathering.
- Easy to open system with turn clips, no tools required.

CHAIN WITH DISK

CAZN380000	38mm Ø ZINC-PLATED STEEL CHAIN (C&D)
CAZN440000	44mm Ø ZINC-PLATED STEEL CHAIN (C&D)
CARA380000	38mm Ø HEAVY DUTY CHAIN (C&D)
CARA440000	44mm Ø HEAVY DUTY CHAIN (C&D)
CACN380000	38mm Ø HARDENED CHAIN (C&D)
CACN440000	44mm Ø HARDENED CHAIN (C&D)

The chains with disks allow feed to move inside the line, thereby keeping the pellets whole and maintaining the meal mixture.



Ø 38 y Ø 44 mm

ULTRA-RESISTANT CHAIN (GREEN)

- Designed for installations with long runs, as the strength of its links makes it more resistant to stretching and tension.



Ø 38 y Ø 44 mm

ZINC-PLATED CHAIN (YELLOW)

- For small and medium-sized systems.



Ø 38 y Ø 44 mm

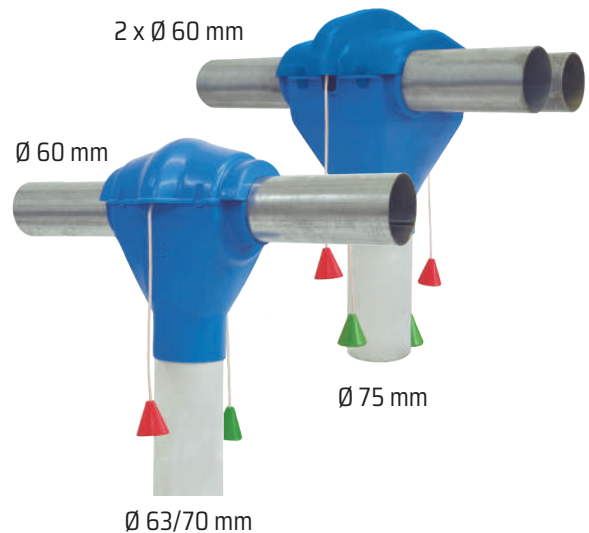
NITRURATED CARBON CHAIN (BLUE)

- Very useful in multi-phase systems. Wear-proof chain.



OUTLET DROP

19860001	Ø 60 DROP OUTLET- Ø63 DOWNPIPE
19860002	Ø 60 DROP OUTLET- Ø70 DOWNPIPE
20300000	Ø 60 DOBLE DROP OUTLET - Ø75 DOWNPIPE



TRANSFER UNIT

The transfer unit guarantees that feed will enter the system in a constant and homogeneous manner.

With hammer or mechanized vibration system for accurate flow control.

Single (for 1 drive unit) or double (for 2 drive units). For Ø 50 and Ø 60 mm pipes.



Single outlet drops are adjustable and easy to install. They are triggered by ropes, with no need to reach the distribution pipe.

The **double outlet drop** is easy to install and is triggered by ropes. It allows feeders to be filled from two different feeding pipes with a single downpipe.

CORELESS AUGER SYSTEM

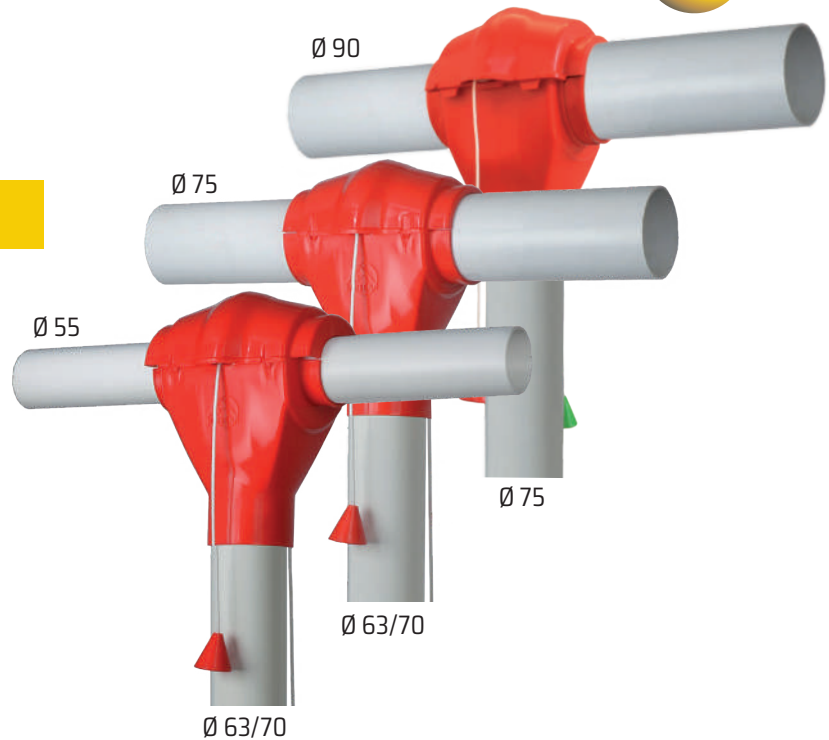


OUTLET DROP

19855001	55 DROP OUTLET, Ø63 mm DOWNPIPE
19855002	55 DROP OUTLET, Ø70 mm DOWNPIPE
19875001	75 DROP OUTLET, Ø63 mm DOWNPIPE
19875002	75 DROP OUTLET, Ø70 mm DOWNPIPE
21800001	90 DROP OUTLET, Ø75 mm DOWNPIPE

ADVANTAGES:

- Side profile that improves the flow of feed when the outlet is heavily tilted.
- Closing slide door with option of manual operation.
- Optional lid.
- High resistance braided nylon rope trigger.



TRANSFER UNIT

With 1, 2 or 3 outlets, combined with single or double silo boots.

The silo outlet consists of a silo boot with a 2-position cut off slide for horizontal and slanted installations.

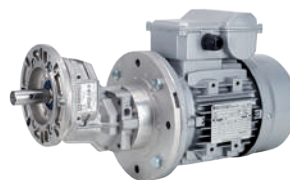
Transfer units for Ø 55, Ø 75 and Ø 90 mm pipes, with single, double and triple models (Ø55 mm). Tandem versions.

AUGER AND LINE PIPE



The line pipes, bends and joints ensure the correct movement of the spiral and feed, minimizing wear.

MOTOR AND CONTROL UNIT



The gear motors ensure that the auger rotates at the right speed (from 1 HP to 1.5 HP).



The control units ensure the correct connection of the auger to the motor shaft and have a filling safety system (in diameters of Ø55, Ø75 and Ø90).

SPLAYLEGSTOP

15700011 SPLAYLEGSTOP (box: 20 units)

When applied in time, the Splay Leg Stop ensures recovery of piglets with this affliction.

ADVANTAGES:

- Keeps the animal's legs together, and the flexible adhesive rubber helps it to stand up.
- If it is not removed manually, it comes apart as the animal grows without causing any damage.
- Very easy to apply.



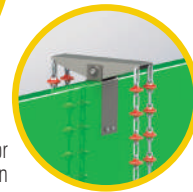
ANTI-STRESS CHAIN

22000001 ANTI-STRESS CHAIN Ø44MM

This manipulable material reduces animal stress and minimizes fighting and such habits as tail biting.



Support for anti-stress chain



ANTI-STRESS FEEDER

18105000	GROW FEEDER ANTI-STRESS
24101000	ANTI-STRESS FEEDER



Access to manipulable materials reduces animal stress, minimizing fighting and such habits as tail biting.

In turn, foods rich in fibre have a satiating effect that reduces and improves the intestinal tract.

ADVANTAGES:

- Compact and resistant.
- Easy to install even in existing systems.
- The grill enables the animals to reach the manipulable material by pulling it.

It is essential for piglets to start ingesting feed as soon as possible, as this makes it easier for them to adapt to the post-weaning phase.



EASY PAN

MINOC30	EASY PAN
---------	----------

ADVANTAGES:

- Its circular design with multiple feeding spaces and warm touch means more animals will use it.
- Can be used to dispense liquids.
- Quick and easy to attach to any type of plastic or metal griled floor.



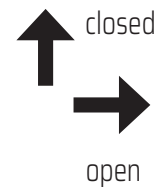
Grip handle with arrow.



Hook for plastic.

MINI PAN

MINOC10	MINI PAN
---------	----------



TECNA PAN

TECOC10	TECNA PAN
TECOC11	TECNA PAN FOR CONCRETE SLAT

ADVANTAGES:

- The exclusive design of the pan with its concave rim prevents feed wastage.
- Rounded rim that makes cleaning easier and maximizes hygiene.
- Maximizes consumption and minimizes waste.

Its diameter allows for several piglets to eat at the same time.



Hook for concrete slats.

Pans get piglets used to eating feed.



MINI HOPPER PAN

MINOC20 | MINI HOPPER PAN

ADVANTAGES:

- Hermetic lid without edges to preserve the aroma and stop piglets from opening it.
- Capacity for several days, thereby reducing labour required to dispense feed.
- Feed flow adjustable to feed particle size.
- Easy to clean.
- Can be attached to any type of metal or plastic gridded floor.



Hermetic lid.



Easy adjustment.

TECHNICAL DATA:

PANS	TECNA PAN	EASY PAN	MINI PAN	MINI HOPPER PAN	MINITAINER
No. of outlet nozzles	5	5	-	5	5
Pan/feeder capacity, l	2	2,6	2,6	2,6 / feeder: 6 l	2,6 / feeder: 4 l
Height, cm	25	32	32	32	32
Diameter, cm	24	27	27	27	27

MINITAINER

1530000P | MINITAINER

ADVANTAGES:

- Semi-transparent container.
- Easy to clean.
- Wide inlet for quick and easy filling/emptying of container.
- Prevents piglets from dunging the pan.
- Hook attachment system operated with one hand using arrow indicating hook direction.
- Rounded rim design.
- Reduces liquid wastage.
- Pan with greater access for piglets.



Container for supply of milk or medication.



Deposit cap.

Its superior design and excellent production results has led it to become one of ROTECNA's star products.



MAXI HOPPER PAN



ADVANTAGES:

- Capacity for several days, thereby reducing labour required to dispense feed.
- Feed flow adjustable at high precision to feed particle size.
- Easy to check tank content.
- Feeder movement significantly facilitates feed flow.

TECHNICAL DATA:

	MAXI PAN	MAXI HOPPER PAN	+ SUPPLEMENT
Pan capacity, L.	9	30	60
Animal weight, kg	6-15		
Suitable for	Weaning	Weaning (support feeder for wean to finish)	
Feed	Dry	Dry	
No. of animals/feeder	20-30		
No. of outlet nozzles	10		
Pan diameter, cm	42,5		
Feeder diameter, cm	-	Max. 38 / min. 16	38
Pan height, cm	8		
Feeder height, cm	-	42	68
Pan grill	Stainless steel (without rivets)		
Setting	-	progressive	

MAXITAINER

134000001 MAXITAINER



Maxitainer is a container for liquid that complements the Maxi Pan.

Specially designed to prepare and medicate piglets for weaning.

ADVANTAGES:

- Maximizes consumption and minimizes waste.
- Large capacity tank with wide filling nozzle.
- With handles for easy carriage.
- Translucent container.

TECHNICAL DATA:

No. of animals/feeder	20-30
Animal weight, kg	6-15
MAXITAINER capacity, l	24
Height, cm	73
Diameter, cm	31,5



Maxi Pan accessory.

Support pan, ideal for weaning and wean to finish.

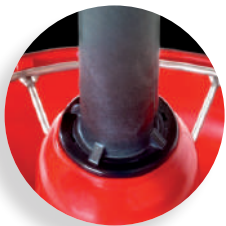


MAXI PAN

18000100	MAXI PAN
18002100	MAXI PAN FOR CONCRETE SLATS



Progressive settings for greater precision.



Easy to assemble.



Stainless steel grille.

ADVANTAGES:

- Circular concave edged pan with no corners that animals cannot reach.
- No rivets or gaps in connections between pieces.
- Connections available for any type of floor.



SET MAXI HOPPER PAN

18000010	SET FOR MAXI HOPPER PAN
----------	-------------------------

- The hopper is used to convert the pan into a Maxi Hopper Pan.

MAXI HOPPER PAN ACCESSORIES

MAXOC23	MAXI HOPPER PAN LID
MAXOC24	MAXI HOPPER PAN EXTENSION



SUPPLEMENT to increase capacity to 60 L



Maxi Hopper Pan accessories.

ADVANTAGES:

- Easy disassembly without screws for complete cleaning.
- LID avoids losses of feed aroma and prevents the entry of humidity and dirt.
- The lid is prepared for inclined or vertical tubes from automatic feeding systems.

VRH



19300000	VRH-3 VALVE
19301000	VRH-3D VALVE
1160200P	VRH VALVE



Constant water level valves for gestation, farrowing, weaning and fattening.

VRH maintain a constant level of water in any container where they are applied, and only work with the pressure of the water that flows through them.



Model VRH3 (*)



Model VRH3-D



Model VRH

ADVANTAGES:

- Closure system by vacuum membrane suction.
- The water stops when it reaches the level of the metal downpipe.
- Rear key for shutting off the flow (*).
- Adjustable water inlet (*).

(*) Options only for model VRH-3.



Membrane



To open, just press the center while you release the clips.

TECHNICAL DATA:

VRH VALVE		
Number of animals	1-20	
Pressure, bar	min.	max.
	Flow, l/min.	2,5
Caudal, l/min.	min.	max.
	1,8	3,6 - 4,2

EASY DRINKER

EASOD20	EASY DRINKER MINI SUCKLING PIGLETS
EASOD10	EASY DRINKER MIDI WEANERS

ADVANTAGES:

- Easy access for animals.
- The bowl collects the excess water.
- Nipple with long push button to reduce the force required for operation.
- Options of regulation of the water flow.
- High resistance PVC injected.

Weaners.

MIDI



Piglets in farrowing pens.

MINI



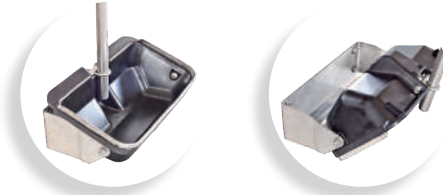
- MINI: Distance to floor 5-8 cm.
- MIDI: Distance to floor 10-12 cm.

SWING DRINKER

102000001 SWING DRINKER WITHOUT VRH-3 (*)

(*) VRH-3 and pipe not included.

Swing drinker for weaning and fattening.



Swing action of the Swing Drinker.

Easy access even for the smallest piglets.

TECHNICAL DATA:

	SWING DRINKER	SWING MAXI	MAXI WET
N° feeder outlets	2-3	1	10
N° animals	25-40	20	72
Animal weight, kg	6-120	300	6-15

ADVANTAGES:

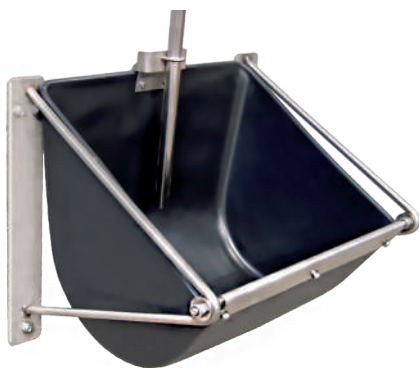
- Quick and easy cleaning to keep the water in the best condition.
- Up to 50% less wastage of water and medicine.
- Less volume of slurry produced.

SWING DRINKER MAXI

17900000 SWING DRINKER MAXI (*)

(*) VRH-3 and pipe not included.

The swing drinker for gestation.



Fixture.



Swivel action Maxi Swing Drinker.

MAXI WET SET

18000023 MAXI WET SET

(*) VRH-3 and pipe not included.

Set for constant drinker level in Maxi Pan for weaning.

VRH level valve adapts to the Maxi Pan to provide water to newly weaned animals.



NI-2 MOBILE



19101000	NI-2 MOBILE 50 CLOSED DOUBLE
19100000	NI-2 MOBILE 50 OPEN DOUBLE
19102000	NI-2 MOBILE 40 OPEN DOUBLE
19103000	NI-2 MOBILE 40 DOUBLE TRANSPARENT
19104000	NI-2 MOBILE 50 DOUBLE TRANSPARENT

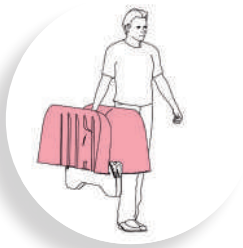
NEW



400 / 500

ADVANTAGES OF NI-2 MOBILE:

- Transportable and easy to install.
- Quickly and easily adjustable height.
- Opening for lamp with connection that prevents drafts.
- Keeps rooms at a lower temperature and reduces the intensity of the heat sources for the piglets, which makes the mother more comfortable.
- Easy access to the inside without ribs that make cleaning difficult.
- Lightweight and resistant monoblock structure.

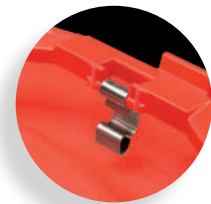


Transportable.

The Ni-2 Mobile is transportable and can easily be moved from one location to another.



Adjustable height.



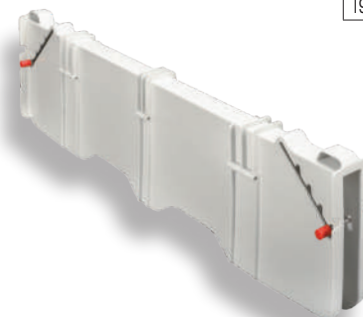
Safety clip to fasten the handles.

COMMON ADVANTAGES OF NI-2

- Reduces energy consumption in farrowing pens by 20% to 40%.
- More and heavier piglets per birth by reducing the mortality rate.
- Increased feed intake by the mother.
- Increase in weight of piglets during weaning.
- Optimizes climate needs of piglets and protects them from drafts.
- Can reduce the ambient temperature of the room, making the mother more comfortable.
- Easy to clean, as it can be lifted to access the bottom.
- Upper opening for the positioning infrared lamp or LED cover.
- Isolates the mother from the lamps' heat.

NI-2 MOBILE ACCESSORIES

19100001 SUPPORT NI-2 MOBILE



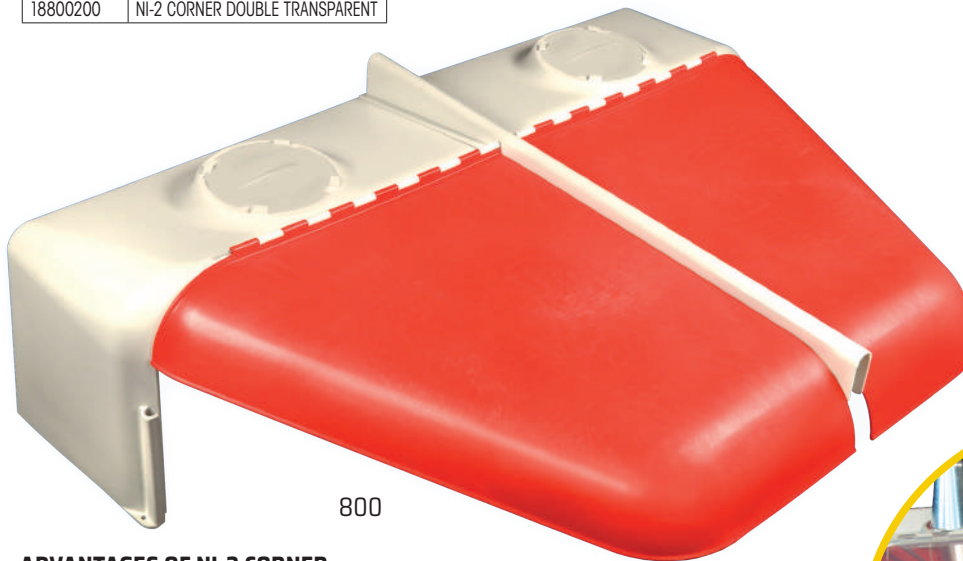
SUPPORT NI-2 MOBILE

- Perfect attachment of the screen to the Ni-2. This prevents air drafts.

NI-2 CORNER



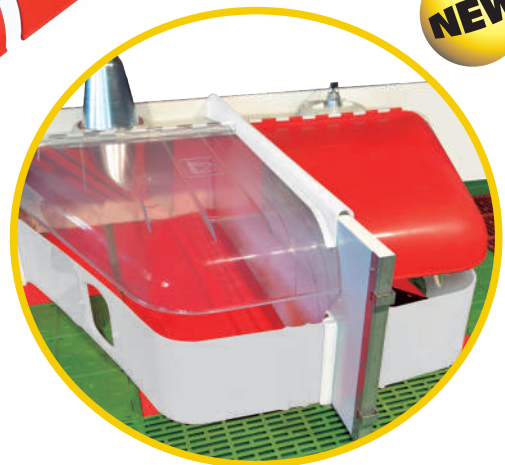
18800000	NI-2 CORNER DOUBLE
18800200	NI-2 CORNER DOUBLE TRANSPARENT



800

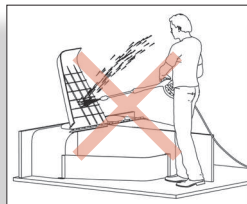
The Ni-2 helps to maintain the optimal microclimate for piglets during farrowing without affecting the mother's comfort.

NEW

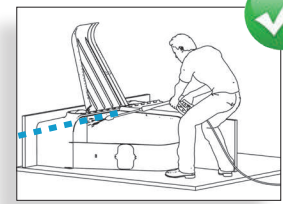
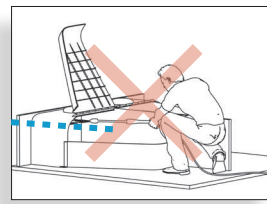


ADVANTAGES OF NI-2 CORNER:

- Can be adapted to the width: from 83 to 60 cm.
- Can be cut to size.
- Slanted fixed part to improve cleaning and resistance.
- Lamp opening with watertight connection.
- No ribs that make cleaning difficult.
- Lightweight and resistant monoblock structure.



With longitudinal ribs that make cleaning easier and prevent the effects of splashing water.



The design of the slanted fixed part makes cleaning easier.

NI-2 CORNER ACCESSORIES

18800015	CLOSING FENCE WITH GATE
18800003	SUPPORT NI-2 CORNER

NI-2 CORNER BRACKET



ENCLOSURE KIT with gate

- The closing fence conserves the temperature in the Ni-2. Piglets have access to the rest of the farrowing place through the gate with door.

NI-2 ACCESSORIES

19100006	LAMP
18800016	LID WITH LED LIGHT, 5W

LAMPHOLDER

- Cast aluminium diffuser that reduces the interior temperature, so the bulb lasts longer.
- 3-position switch: ON / OFF / 60 %..



LID WITH LED LIGHT, 5 W

- The use of light for the period immediately after birth reduces the time required by the piglets to find the nest and start using it, which significantly reduces mortality due to hypothermia and crushing.

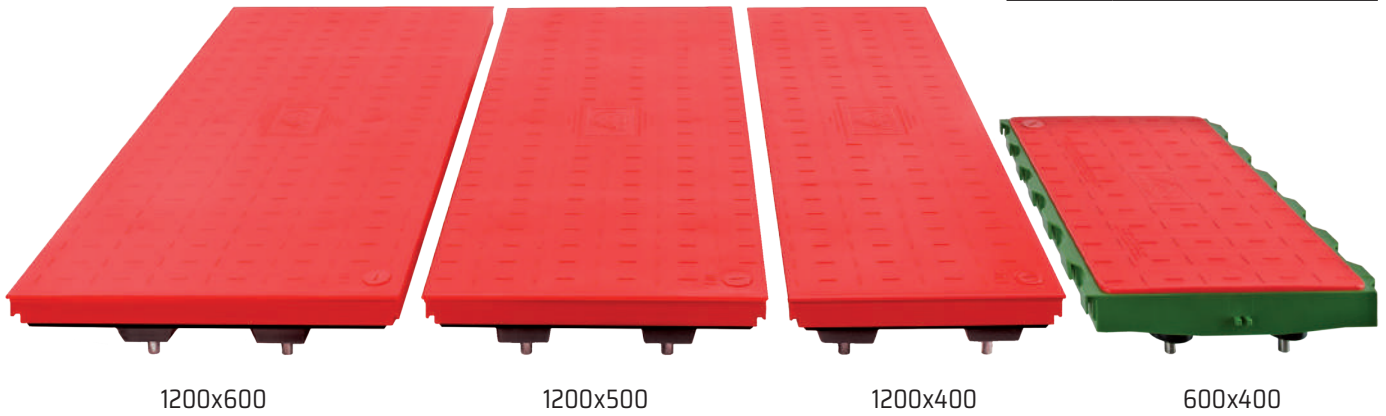


WATER HEATED PLATES



The heated plates create a zone of high comfort for piglets in farrowing, transition and wean to finish systems.

17505000	1200x400mm WATER HEATED PLATE
17605000	1200x500mm WATER HEATED PLATE
17705000	1200x600mm WATER HEATED PLATE
14510000	600x400 mm WATER HEATED PLATE

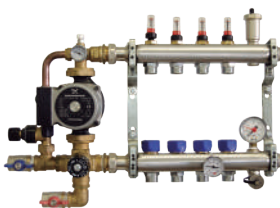


ADVANTAGES:

- Low consumption.
- Do not emit heat into the environment.
- Isolate animals even after they have been turned off.
- Optimal temperature distribution over the entire surface.
- Upper filling with air purge system.
- Comfortable with anti-slipping surface.

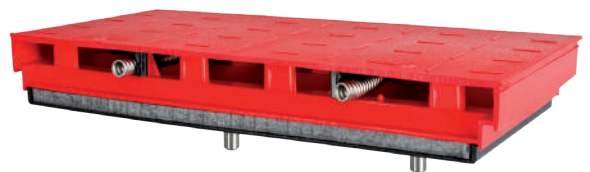
TECHNICAL DATA	120x40	120x50	120x60	60x40
Capacity, l	13	19	23	3,8
Max. thermal emission, W	140-170	170-190	200-220	70-85
Net weight, kg (empty)	5,80	7,00	8,70	2,10
Min. flow, l/min.	0,5			
Max. water temperature	50 °C			
Connections, mm	Ø 15			

WATER HEATED PLATE COLLECTOR



14701000	HEATCONTROL 2M COLLECTOR
14702000	HEATCONTROL 4M COLLECTOR

For distribution and control of the water that regulates pad temperature.

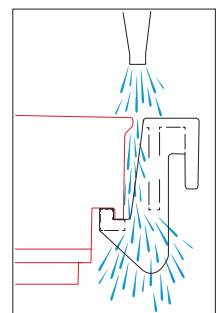
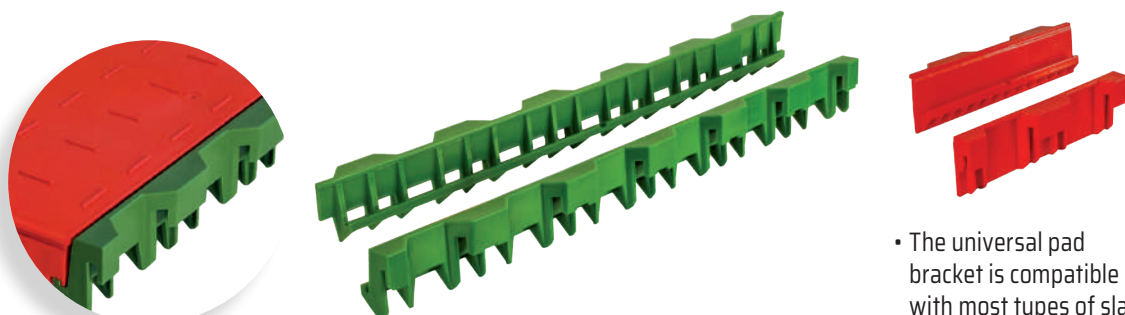


Interior view of water heated plate.

PLATE BRACKET

17500006	1200 SUPPORT PLATE (KIT 4 PIECES)
19900000	UNIVERSAL SUPPORT PLATE (KIT 12 PIECES)

The pad bracket is easy to install. Its design is very hygienic as it prevents the accumulation of dirt and means the space between the pad and the bracket can be cleaned.



- The universal pad bracket is compatible with most types of slat on the market.

ELECTRIC HEATED PLATES



With optimal temperature distribution on their surface, heated pads are extremely efficient.



17510000	1200x400mm ELECTRIC HEATED PLATE	120W
17610000	1200x500mm ELECTRIC HEATED PLATE	150W
17710000	1200x600mm ELECTRIC HEATED PLATE	180W
14520000	600x400mm ELECTRIC HEATED PLATE 230V	70W
14530000	600x400mm ELECTRIC HEATED PLATE 10V	70W



1200x600

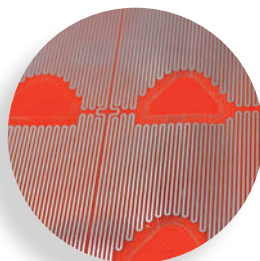
1200x500

1200x400

600x400

TECHNICAL DATA	60x40	120x40	120x50	120x60
Maximum power consumption, W	70	120	150	180
Average power consumption, W	40*	75*	90*	110*
Voltage, V	110/230		230	
Heated area, m ²	0,21	0,45	0,57	0,69
Weight, kg	3,13	5,90	7,20	8,70
Installation connection	Using regulation unit			
Cable length	4			

(*)Approx. value depending on ambient.



Resistance of the electric plate.

ADVANTAGES:

- Optimized irradiation and efficiency.
- Do not emit heat into the environment.
- Isolates animals even after they have been turned off.
- Optimal temperature distribution over the entire surface.
- Reduction in the number of connections and cables (4 m of cables).
- Overhead heating element, just 4 mm away from the animals.
- The pad's air chamber insulates the part below.

ELECTRIC HEATED PLATE ACCESSORIES

E0000348	HF25A/230V CONTROLLER - 25A
E0000236	HF20S/230V CONTROLLER - 16A
E0000294	HF20S/110V CONTROLLER - 16A
E0000235	HF20C/230V CONTROLLER WITH SWITCHES - 16A



PLATE CONTROLLER MODELS

- HF25A and HF20S - Regulator for farrowing and weaning room.
- HF20C - Regulator with switches for individual disconnection of up to 20 plates.

TECHNICAL DATA	HF25A	HF20C	HF20S-230 V	HF20S-110 V
Maximum power W (recommended)	5000	3000	3000	3000
Maximum power per switch, W	-	350	-	-

WEANER SLATS

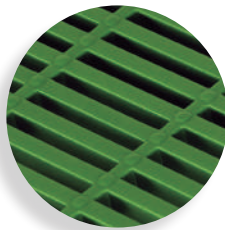
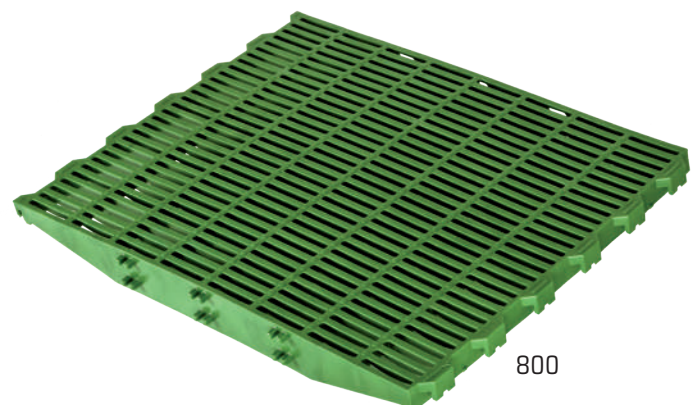
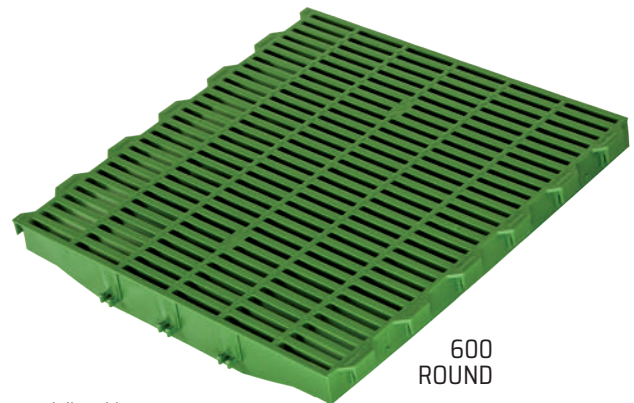
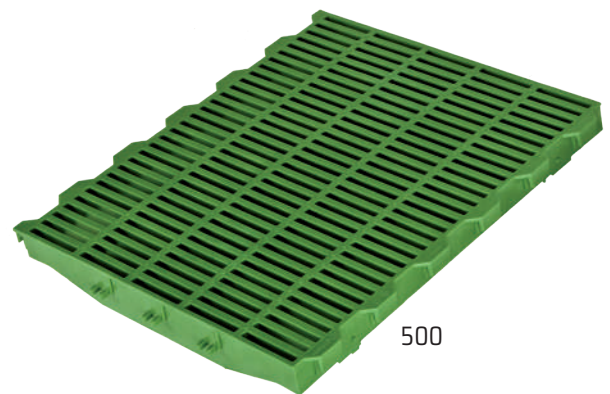
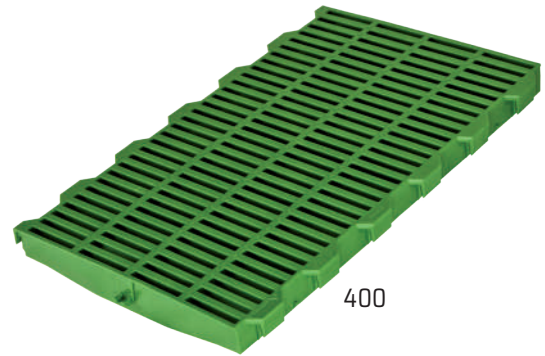


SLAOF3001	600x400 mm WEANER SLAT
SLAOF4001	600x500 mm WEANER SLAT
SLAOF90	600x600 mm WEANER ROUND SLAT
19200000	600x800 mm WEANER SLAT

Ideal for transition and farrowing.

Weaner slats keep the animals clean and dry, reduce heat loss due to contact and provide the necessary comfort and grip.

The direction of the ribs maximizes resistance and their convex surface ensures good drainage and grip.



Surface of weaning slats.



Round ribs with convex surface.

ADVANTAGES:

- Highly resistant and durable.
- Very easy to clean and disinfect.
- Fast drying and excellent drainage.
- Piglets lose less heat by contact.
- Smooth surface with very good traction.
- Wider slats mean less assembly, better drainage and hygiene and less cost of support beams.

TECHNICAL DATA:

WEANER SLATS	600x400	600x500	600x600 ROUND	600x800
Maximum animal weight, kg	60	60	60	60

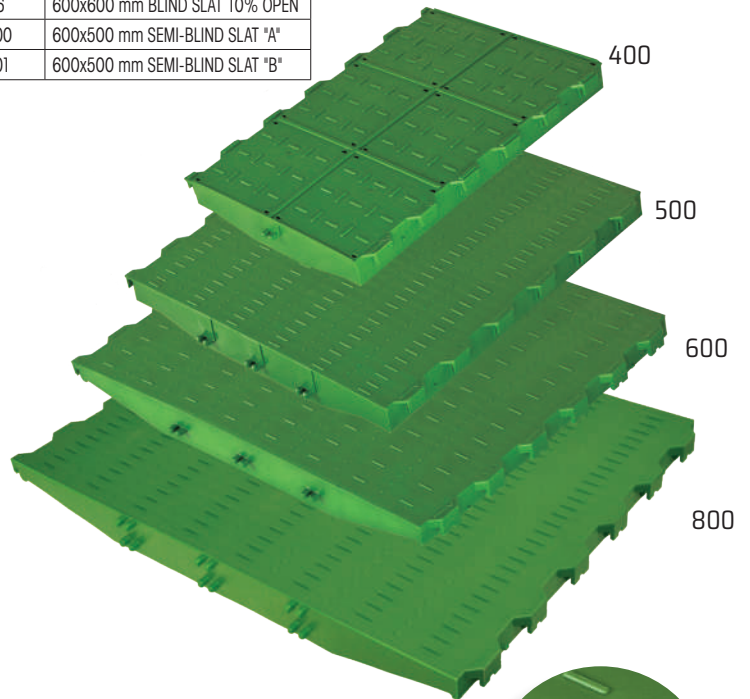
BLIND SLATS



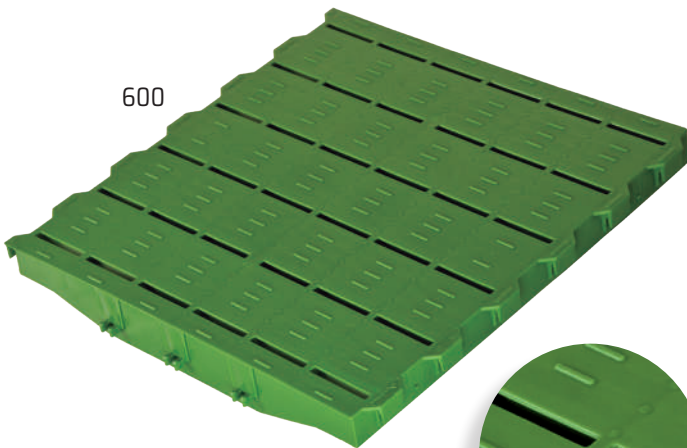
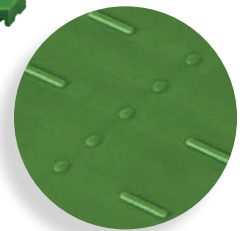
SLA0F80	600x400 mm BLIND SLAT
SLA0F102	600x500 mm BLIND SLAT
18600000	600x600 mm BLIND SLAT
19200100	600x800 mm BLIND SLAT
SLA0F96	600x600 mm BLIND SLAT 10% OPEN
SLA0F100	600x500 mm SEMI-BLIND SLAT "A"
SLA0F101	600x500 mm SEMI-BLIND SLAT "B"

For piglets and sows.

- Rest surfaces for farrowing, transition and wean to finish.
- Isolates the animals from the gases coming from the pits and disturbing drafts.
- Thermally insulating and the ideal surface for projecting sources of radiant heat onto.
- Under feeders and pans help to collect wasted food remains.
- Installed under the front of the farrowing cage they make for an ideal resting surface that is smooth and has a good grip, minimizing problems with shoulder ulcers and nipple damage (600x400).

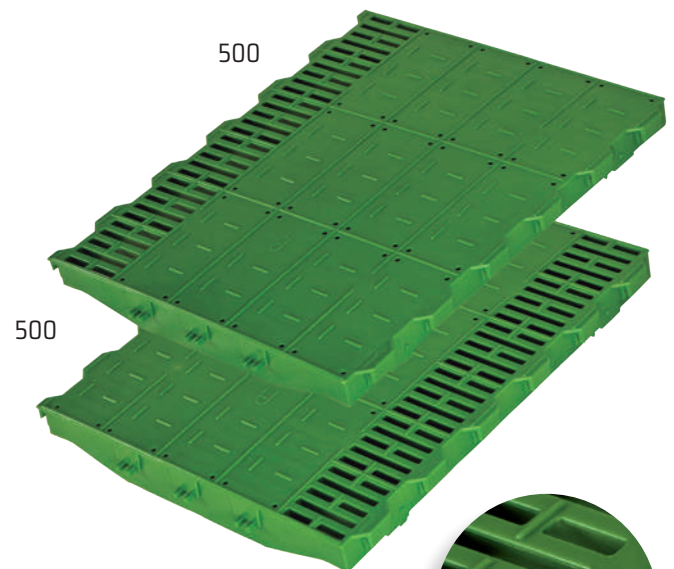
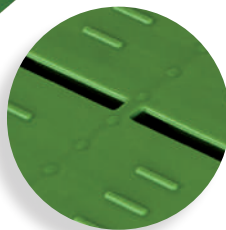


100% BLIND



600

600x600
10% OPEN



500

500

SEMI-BLIND



ADVANTAGES:

- Highly resistant and durable.
- Very easy to clean and disinfect.
- Animals lose less heat by contact.
- Smooth surface with very good traction.

TECHNICAL DATA:

BLIND SLATS	600x400	600x500	600x600	10% OPEN	SEMI-BLIND 'A'	SEMI-BLIND 'B'
Maximum animal weight, kg	350	130	110	110	130	130
Non-slip surface	Yes (especially sows)	Yes*	Yes*	Yes*	Yes*	Yes*

*Exclusive non-slip design for closed surfaces.

SOW SLATS

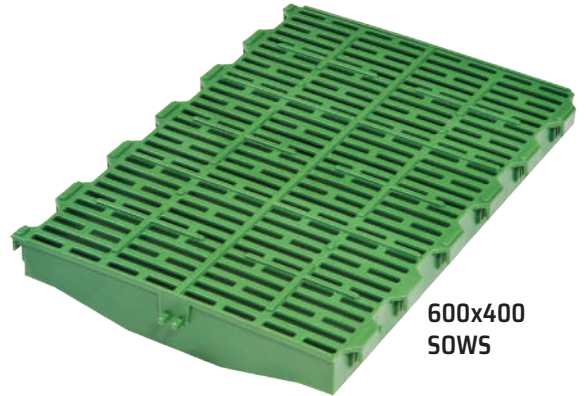


SLA0F70	600x400 mm SOW SLATS
20200000	600x400 mm SOW SLATS COMFORT
18500001	600x800 mm SOW SLATS CONFORGRIP

To install underneath farrowing sows.

The slats for sows are ideal for installation under the cage or pen in farrowing, as they keep the animals clean and dry, providing the necessary comfort without damaging the sows' nipples or the piglets' hooves.

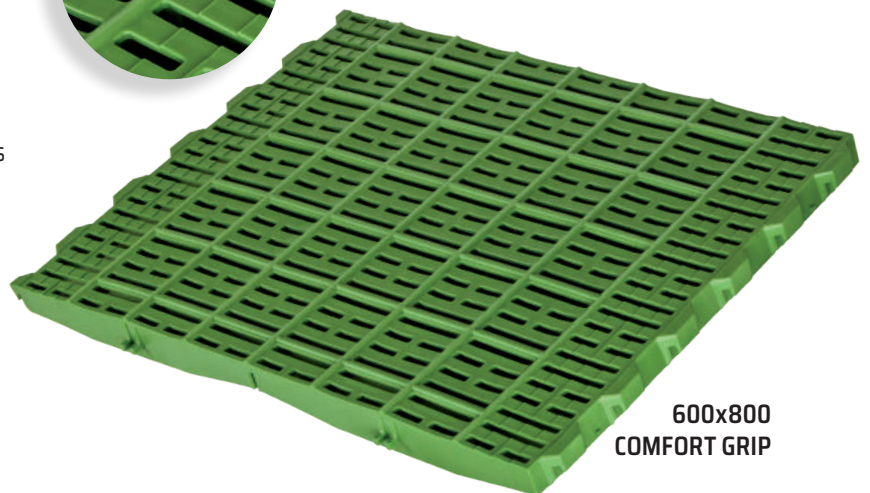
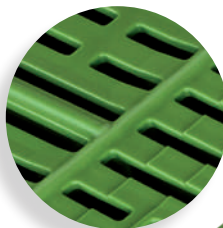
The direction of the paired interconnected ribs maximizes resistance, and with the non-slip profiles on their surface ensures good drainage and grip.



600x400
SOWS



600x400
COMFORT GRIP



600x800
COMFORT GRIP



Central support.

ADVANTAGES:

- Highly resistant and durable.
- Very easy to clean and disinfect.
- Fast drying and excellent drainage.
- Animals lose less heat by contact.
- Smooth surface that is not harmful to shoulders or nipples.
- Excellent traction for sows.
- Excellent grip for piglets to suckle without damaging hooves or knees.
- Beam to beam ribs in the same direction as the bridges for greater resistance.
- Ribs interconnected in pairs.

TECHNICAL DATA:

SOWS SLATS	600x400	600x400 COMFORT	600x800 COMFORT GRIP
Maximum animal weight, kg	350	350	350
Non-slip surface	Yes (especially sows)	Dual anti-slip	Si

WEAN TO FINISH SLATS

15500020	600x400 mm WEAN TO FINISH SLAT
SLAOF49	600x500 mm WEAN TO FINISH SLAT

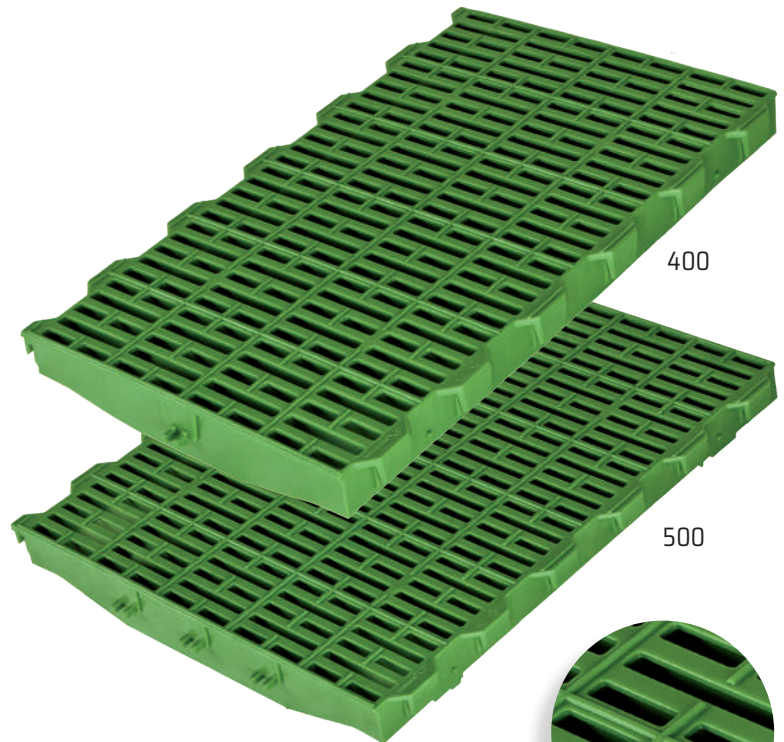


For farrowing, transition and fattening.

Wean to finish slats keep the animals clean and dry, reduce heat loss due to contact and provide the necessary comfort and grip.

The design of the ribs and surface maximize resistance and ensure good drainage and grip.

Suitable for farrowing crates.



ADVANTAGES:

- Highly resistant and durable.
- Very easy to clean and disinfect.
- Fast drying and excellent drainage.
- Animals lose less heat by contact.
- Smooth surface with very good traction.
- Wider slats mean less assembly, better drainage and hygiene and less cost of support beams.

TECHNICAL DATA:

WEAN TO FINISH SLATS	600x400	600x500
Maximum animal weight, kg	130	130
Non-slip surface	Yes	Yes

1200x500 SLATS

13200000	1200x500 mm SLAT
13500000	1200x500 mm BLIND SLAT 10% OPEN

Comfort and warmth.

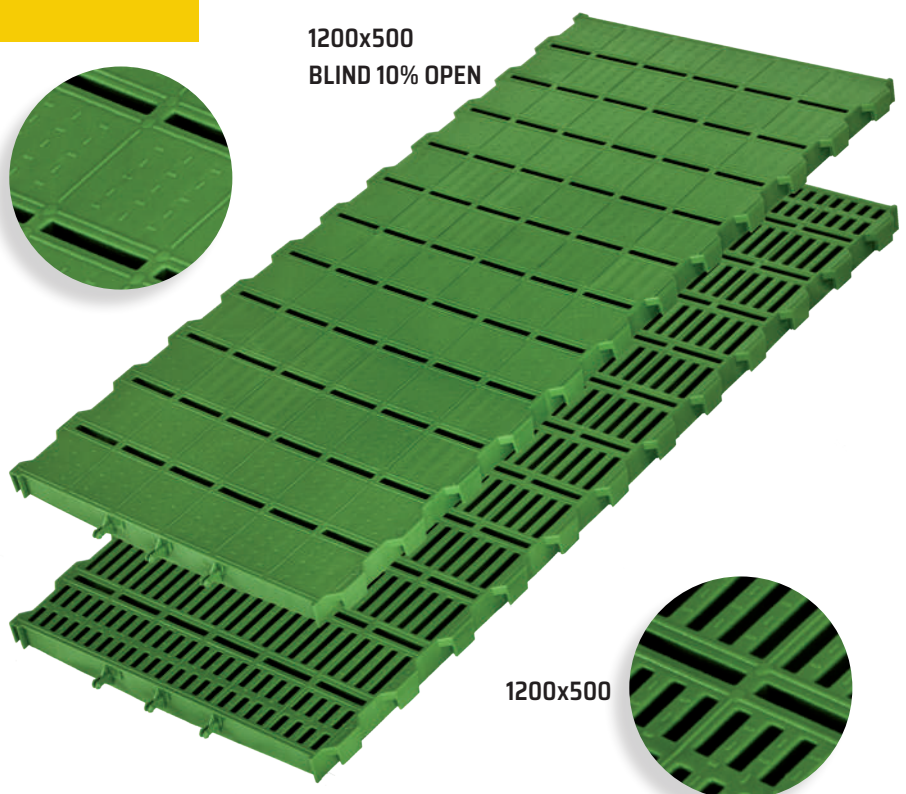
ADVANTAGES:

- Easy cleaning and disinfecting.
- Designed to cut transport costs.
- Not combinable with other slats of this brand.

TECHNICAL DATA:

	1200x500	10% open
Maximum animal weight, kg	50	50
Non-slip surface	Yes	Yes *

*Exclusive non-slip design for closed surfaces.



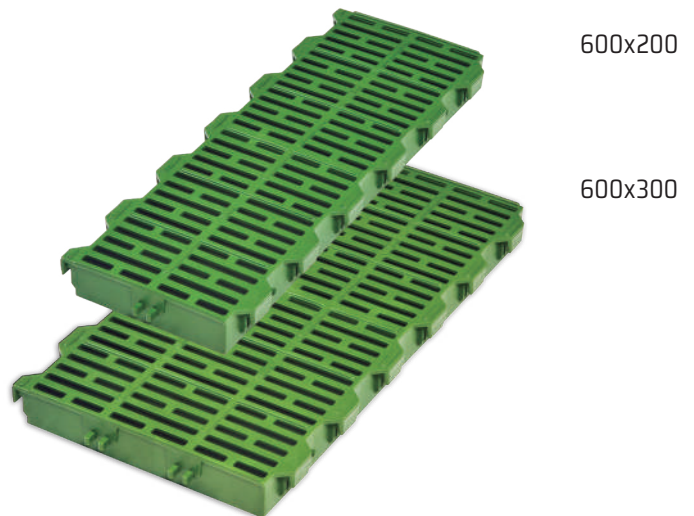
COMPLEMENTARY SLATS



16800000	100x400 mm SLAT
16900000	100x500 mm SLAT
SLAOF20	200x400 mm SLAT
SLAOF200	200x600 mm SLAT
SLAOF50	600x200 mm SLAT
SLAOF60	600x300 mm SLAT

Complementary plastic slats for sows and piglets.

Complementary slats permit a wide range of designs in farrowing, transition and fattening, which improves the features of floors and reduces their cost.



ADVANTAGES:

- In farrowing, mean the piglet rest area can be separated from that of the mother.
- Can be combined with cast slats in the areas outside the mother's entrance to the farrowing pen, reducing the cost and allowing piglets to be born in a cleaner and more isolated area.
- Special widths or lengths permitted in any installation without the need to cut slats.

TECHNICAL DATA:

COMPLEMENTARY	100x400	100x500	200x400	200x600	600x200	600x300
Maximum animal weight, kg	110	110	110	350	110	110
Non-slip surface	Yes	Yes	-	Yes	Yes	Yes
Suitable for installation under sow	No	No	No	Yes	No	No

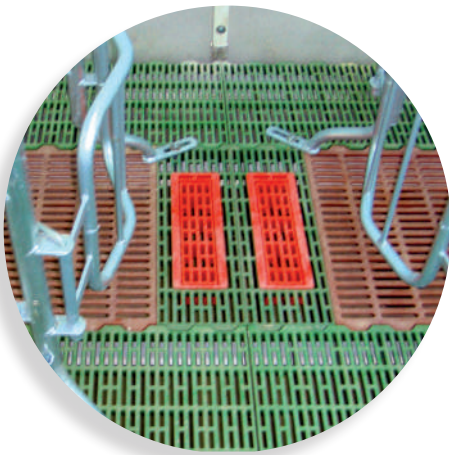
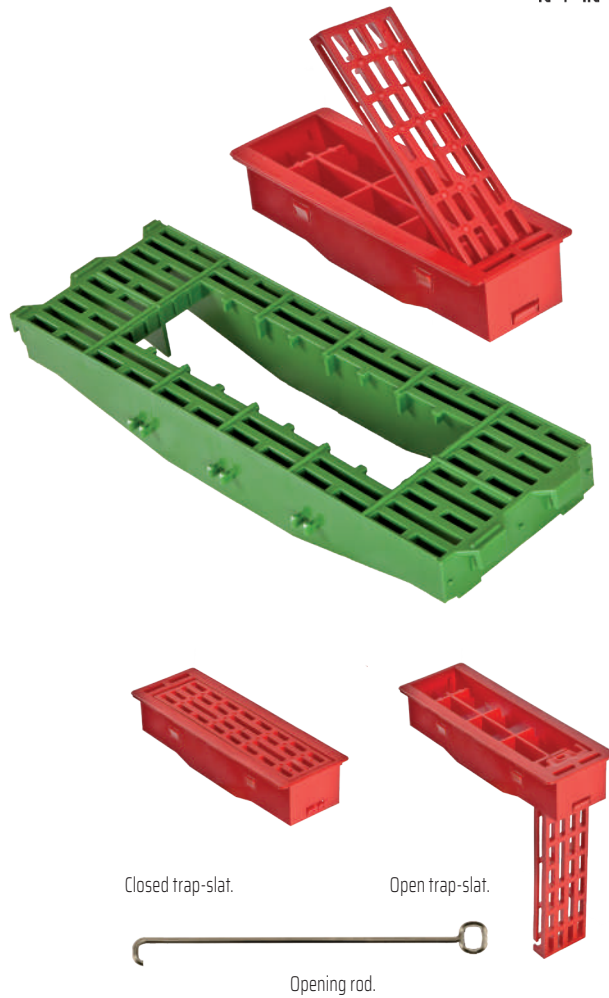
TRAP-SLAT

161000001	TRAP-SLAT
161101010	200x600 mm SOW SLAT FOR TRAP-SLAT
16100030	TRAP-SLAT OPENING ROD



Slide gate for cleaning in farrowing rooms.

A Trap Slat installed behind the farrowing sow's cage is the ideal slide gate for removing the mother's manure to ensure good hygiene in the farrowing pen.



ADVANTAGES:

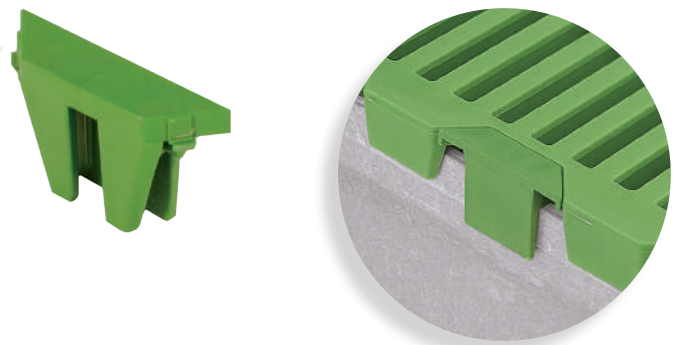
- Easy to install.
- Easy to open and close.
- When the piglets are large enough it can be left open.
- Internal grill provides resistance and prevents piglets from escaping out the hatch.
- Features tabs that are adaptable to 200x600 mm Mother and 600x400 mm Mother slats.
- Sliding retractable lid.

SLAT ACCESSORIES

SLA0F01	SLAT TRIM
---------	-----------

Finishing tab for plastic slats.

Finishing tabs give the floors a perfect dirt-free finish.



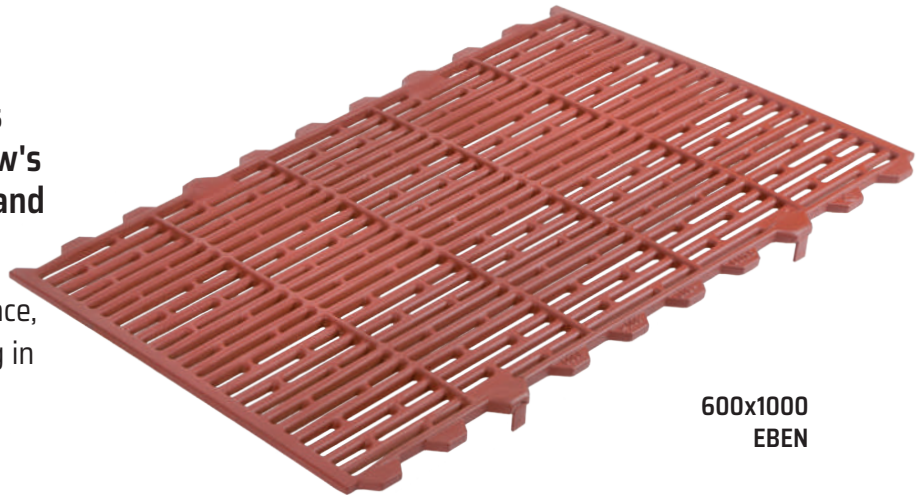
FERROCAST CAST SLATS



SLAOG37	600x600 mm PROFIL-EBEN FERROCAST SLAT
SLAOG38	1200x600 mm PROFIL-EBEN FERROCAST SLAT
SLAOG39	1000x600 mm PROFIL-EBEN FERROCAST SLAT
SLAOG35	1200x630 mm PROFIL-STEP FERROCAST SLAT
SLAOG36	1000x630 mm PROFIL-STEP FERROCAST SLAT

Ferrocast ductile cast iron slats help disperse the farrowing sow's body heat, increasing comfort and feed intake.

However, piglets avoid the cold surface, helping to reduce deaths by crushing in the first days of life.



600x1000
EBEN

- Greater feed intake by the sow and less crushing in farrowing.
- Resistant and durable. Does not become rough with the passage of time.
- Smooth corrugated finish, without edges that can damage the piglets' hooves or the sows' nipples.
- The quadricular design of its convex ribs on different levels provides excellent drainage, a very good resting area and optimal grip.



EBEN



STEP

TECHNICAL DATA

Maximum animal weight, kg	350
Non-slip surface	Yes

IRON CAST ANTI-SLIP

SLAOG10	600x400 mm CAST IRON ANTI-SLIP SLAT
SLAOG11	600x600 mm CAST IRON ANTI-SLIP SLAT
SLAOG12	600x600 mm 10% OPEN CAST IRON ANTI-SLIP SLAT

Anti-slip cast slats offer a cold surface for use in farrowing, transition or fattening systems.

In times of heat stress, the cast iron helps to disperse the animals' body heat, increasing their comfort and feed consumption. However, in moments of cold stress, the animals avoid the cold surface, helping to reduce deaths by crushing.



600x400

600x600

600x600
BLIND 10% OPEN



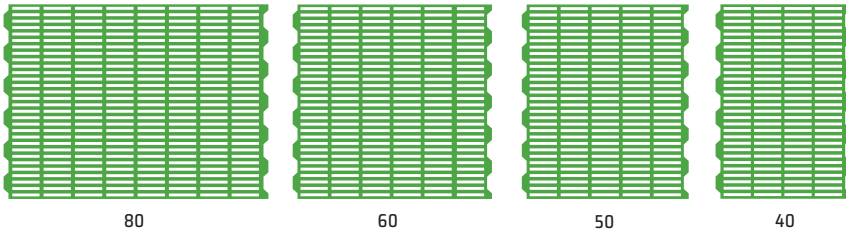
TECHNICAL DATA

Maximum animal weight, kg	350
Non-slip surface	Yes

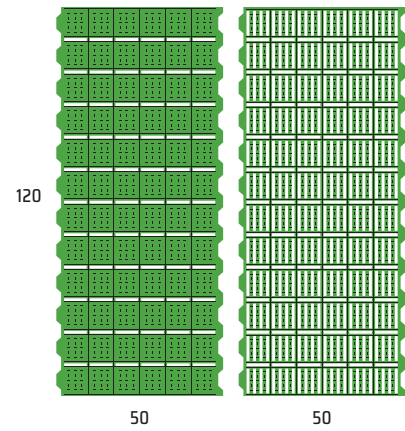
WIDE RANGE OF SLATS



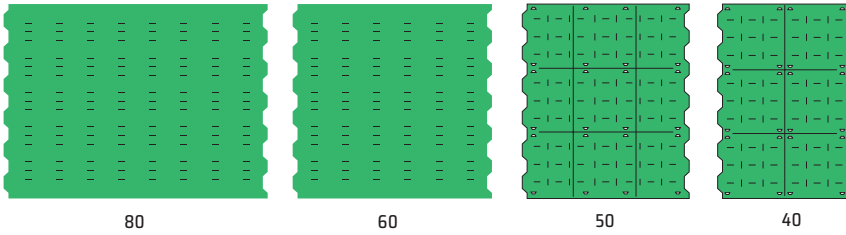
WEANER SLATS



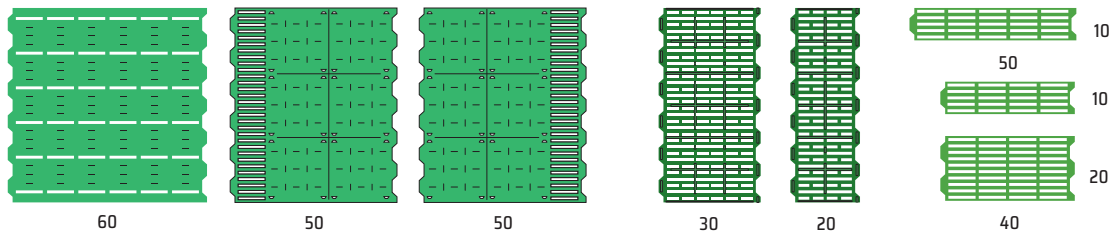
WEANER 1200x500 SLATS



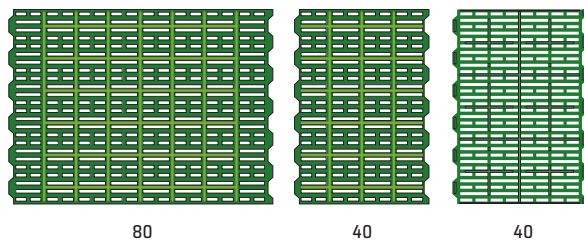
BLIND SLATS



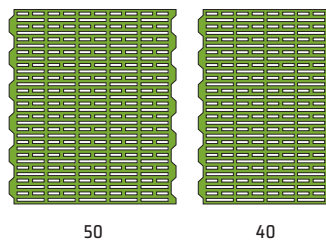
COMPLEMENTARY SLATS



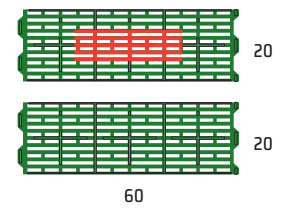
SOW SLATS



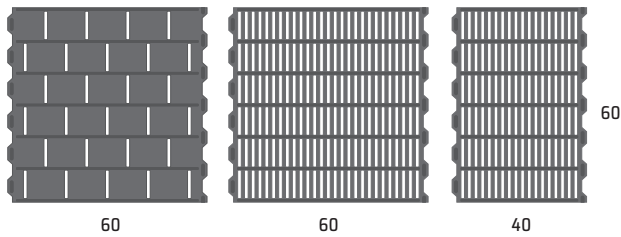
WEAN TO FINISH SLATS



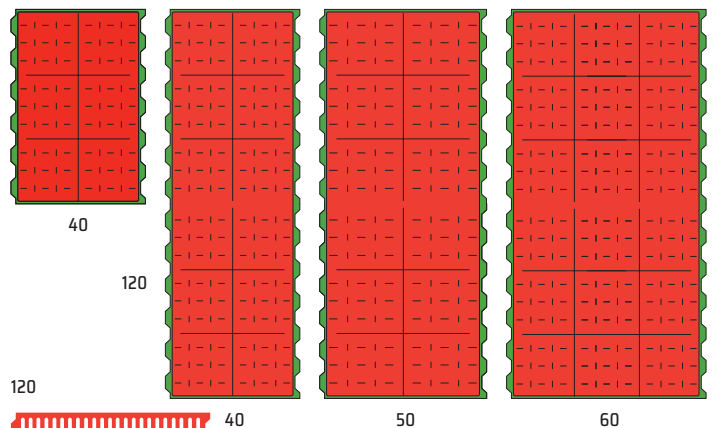
TRAP-SLAT



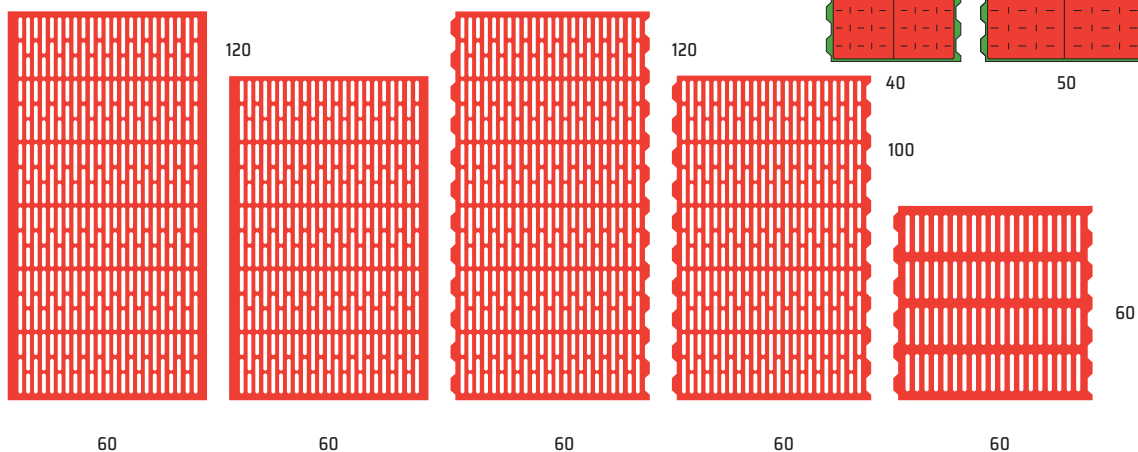
IRON CAST ANTI SLIP



HEATED PLATES ELECTRIC / WATER



FERROCAST[®] CAST SLATS



DELTA BEAM

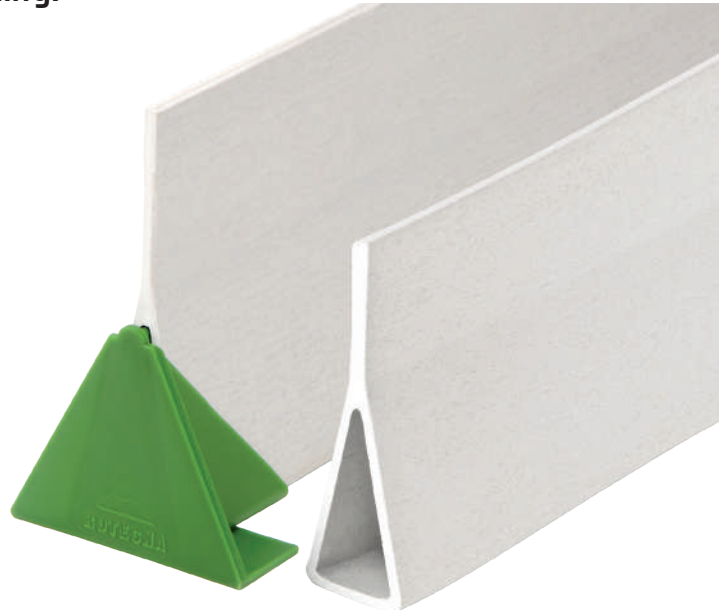


DELOG24	120 mm DELTA BEAM
DELOG21	135 mm DELTA BEAM
DELOG23	SILENT BLOCK DELTA

Delta profile beams provide perfect vertical stability.

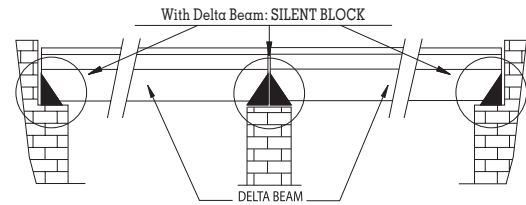
- Manufactured with synthetic resin and fiberglass.
- To support slats in farrowing and weaning pens.
- Rust-proof. Not affected by ammonia in slurry or by the amino acids in feed.
- Triangular design offers excellent resistance and prevents dirt from gathering.

Installation of Delta Beam compulsory with Silent Block Delta.



TECHNICAL DATA:

Distance between supports, cm	FARROWING			WEANING			
	400	600	800	400	500	600	800
140-180	120	120	120	120	120	120	120
180-200	120	120	120	120	120	120	120
200-220	120	120	120	120	120	120	120
220-240	120	120	120	120	120	120	120
240-260	120	135	135	120	120	120	120
260-280	-	-	-	120	120	120	120
280-300	-	-	-	135	135	135	135

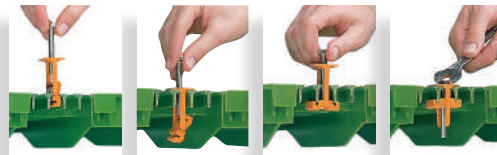


IMPORTANT: ROTECNA DOES NOT WARRANT THE DELTA BEAM PROFILES IF THEY ARE NOT INSTALLED ACCORDING TO THE INSTRUCTIONS IN THE DIAGRAM SHOWN ABOVE.

ERGOFIX

ERGOG10	ERGOFIX PLASTIC (50 units)
ERGOG11	ERGOFIX CONCRETE (50 units)

- Does not damage slats.
- Synthetic support to distribute weight and prevent slat wear.
- Easy and quick assembly.
- Highly durable.



The Ergofix fixture is easily installed from the top part of the slat.

Ergofix, fixture for plastic and concrete slats.



Ergofix concrete 10 mm nut.

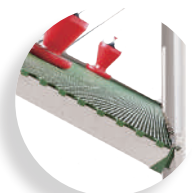
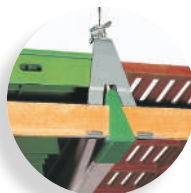


Ergofix plastic 8 mm nut.

DELTA NET

DELOG10	DELTA-NET HINGE
DELOG11	DELTA-NET SILENT BLOCK CAP
DELOG12	DELTA-NET CONNECTION PROFILE
GANKODELTA	DELTA NET SUSPENSION HOOK
DELOG30	DELTA NET SPECIAL PULLEY
UNIODELTAN	DELTA NET CONNECTION PROFILE JOINT

The Delta Net liftable floor system for farrowing and transition allows easy access to the pits and underside of the grills and beams for cleaning.



Very secure fixing to the wall. Easy to lift. Major savings in terms of renovations.

High resistance and durability. Non-corrosive materials

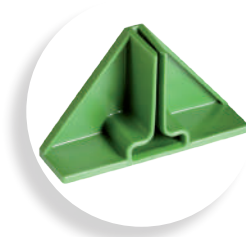
T BEAM

DELOG40	90 mm T BEAM
DELOG41	120 mm T BEAM
O2803001	T SILENT BLOCK

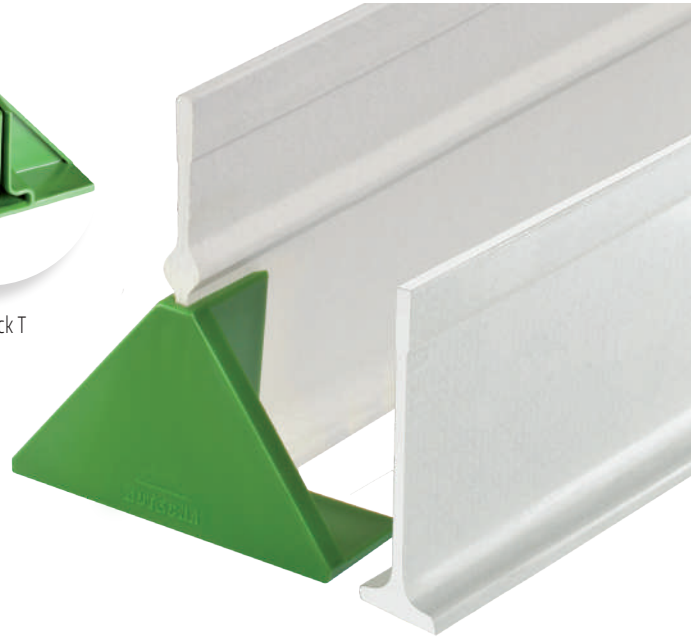
T profile beams are highly resistant.



- Manufactured with synthetic resin and fiberglass.
- Not affected by ammonia in slurry or by the amino acids in feed.
- T design for high resistance.
- With Silent Block T, the profile improves stability.
- Easy to clean.



Silent Block T



TECHNICAL DATA:

Distance between supports	FARROWING			WEANING			
	400	600	800	400	500	600	800
140-180	120	120	120	90	90	90	120
180-200	120	120	120	90	90	120	120
200-220	120	120	120	90	120	120	120
220-240	120	120	120	120	120	120	120
240-260	120	-	-	120	120	120	120
260-280	-	-	-	120	120	-	-



BASIC POST

14000001	BPB KIT FOR PIPE (0-110mm)
14000060	BPB PIPE TO 371mm
14000070	BPB PIPE TO 471mm
14000080	BPB PIPE TO 571mm
14000300	Ø35x2,7x3000mm BPB PIPE

*(nut support, support base, red thread)

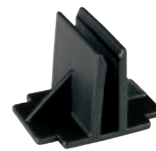
Support column for slat's beams for pigs.

- No need to build supporting walls.
- For making larger pits without walls.
- Easy to install.
- Adjustable in height once assembled.
- Rust-proof.

METAL BEAM GUIDE

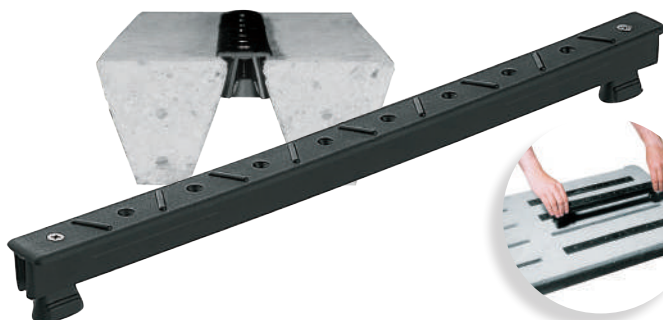
14000100	5mm METAL BEAM GUIDE
----------	----------------------

- Used to support metal beams (5 mm).
- Reduces wear of metal plates on the floor.
- Easier installation and reduces costs.



CLICK-IN

CLIOF10	CLICK IN
---------	----------



Ideal for blinding concrete grills for fattening and gestation pigs.

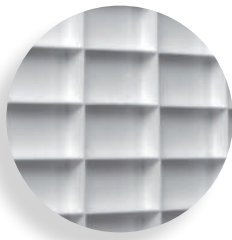
- Can be used to create comfortable, draft-free rest areas.
- Quick and easy assembly and disassembly from the surface.
- Inserted in and attached to the holes in the concrete grills.
- Made of polypropylene, with non-slip surface.

PANELS



PP Panels come in blind, ventilated or mixed versions and are highly versatile, allowing the construction of walls and partitions in any type of livestock farm.

18401000	BLIND PANEL BLACK 1200x1000
18404000	BLIND PANEL GREEN 1200x1000
18402000	BLIND PANEL GREY 1200x1000
18403000	BLIND PANEL WHITE 1200x1000
18451000	VENTILATED PANEL BLACK 1200x1000
18454000	VENTILATED PANEL GREEN 1200x1000
18452000	VENTILATED PANEL GREY 1200x1000



Internal structure



Pig farmers must bear 2 essential advantages in mind when building pens:

- Resistance to impact by animals and corrosive agents.
- Cleaning and disinfection are made extremely simple.



Made of polypropylene, without nooks and crannies and completely watertight, which is a major benefit for making washing and disinfection of the site easier and to hence raise hygiene levels, helping to reduce the use of antibiotics.

ADVANTAGES:

- Made of highly resistant and durable rust-proof materials.
- Internal structure with extremely resistant cells.
- Very easy to adapt and install.
- Lightweight.
- Made to measure.
- Weldable with extruded cord.
- Extremely hygienic.
- Save at least 20% of time and water for cleaning, the result being much cleaner than other materials that are more porous or have nooks and crannies.



FAST DOOR KIT

18400100 FAST DOOR KIT (SCREWS NO INCLUDED)



The Fast Door Kit is an innovative closing system for gates in panelled pens for fattening and gestation pigs.

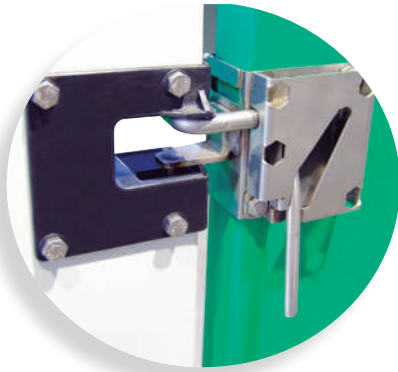
For quick and easy opening on both sides, both inside and outside the pen using just one hand.

ADVANTAGES:

- Easy and quick to assemble and use.
- Quick closing and securing with one hand.
- Highly versatile.
- Made of highly resistant and durable rust-proof materials.
- Taperlock housing system.
- Handle with spring lock.

ASSEMBLY GUIDE

- Used to maintain expansion and shrinkage margins.
- Essential for installing the gate.
- Must be removed once installation is complete.



BRACKETS FOR PANELS

18400050	T BRACKET
18400051	U WALL BRACKET

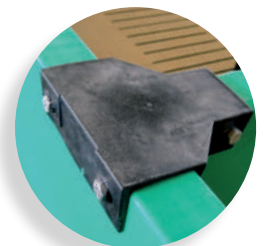
Polyamide brackets are used to connect T-shaped panels and against walls to make pens.



T bracket



UT wall bracket

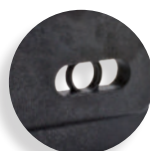


T bracket for panels.



UT wall bracket.

- **T bracket:** For joining panels at perpendicular angles.
- **UT wall bracket:** For fixing panels to walls.



Centering guide for installation that absorbs expansion and shrinkage.

PANEL PROFILES



18400204	GREY PANEL H-PROFILE
18400205	WHITE PANEL H-PROFILE
18400203	GREY PANE U-PROFILE
18400206	WHITE PANEL U-PROFILE

PVC profiles are used for easy construction of walls with a perfect and hygienic finish.

These provide stability, very hygienic environments and a neater finish.

H-shaped profile: For joining panels together.

- Features innovative and exclusive system of internal flaps that cushion the expansion and shrinkage of panels due to changes in temperature.

U-shaped profile: Used to fix panels to a wall.



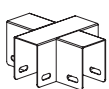
U-shaped.



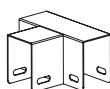
H-shaped, with flaps that absorb panel expansions.

STAINLESS PANEL BRACKETS

18400010	SS X BRACKET	1
18400004	SS T BRACKET	2
18400011	110x110x45 mm SS ANGLE	3
18400019	750 mm SS DELTA BRACKET	4
18400006	METAL PLATE FOR DELTA	4
18400058	750 + 200 mm SPECIAL DELTA IX	5
18400018	1000 mm SS H BRACKET	6
18400013	50x50x990 mm SS SHORT L BRACKET	7
18400055	100x100x990 mm SS LONG L BRACKET	8
18400014	990 mm SS PLATE	9
18400017	1000 mm SS U WALL FINAL BRACKET	10
18400026	1000 mm SS U WALL CENTRAL BRACKET	11



1



2



3



4



5



6



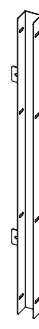
7



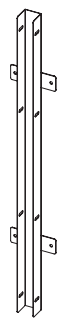
8



9



10



11

SEMI-PANELS

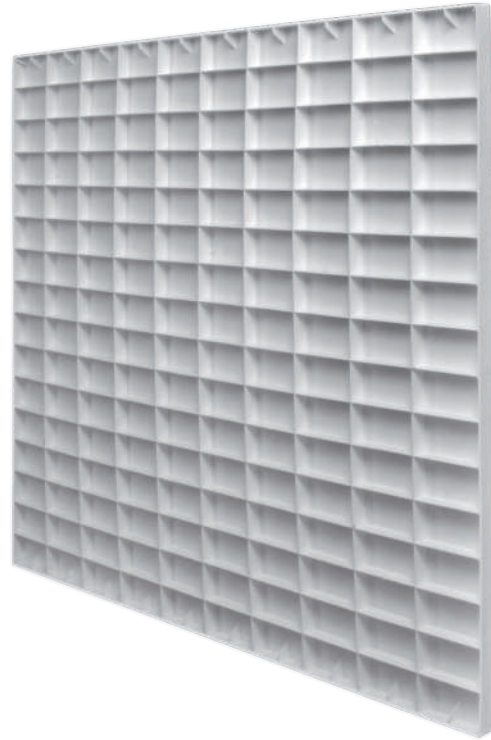


18401001	WALL PANEL BLACK 1200x1000
18404001	WALL PANEL GREEN 1200x1000
18402001	WALL PANEL GREY 1200x1000
18403001	WALL PANEL WHITE 1200x1000

PP Semi-Panels are used to line walls to insulate animals against cold and/or abrasive surfaces. They also provide a hygienic and highly resistant finish.

ADVANTAGES:

- Insulate walls.
- Protect animals from cold and/or abrasive surfaces.
- Easier cleaning and hygiene.
- Made of highly resistant and durable rust-proof materials
- Internal structure with high resistance cells.



SEMI-PANEL PROFILES

18400200	WALL LOWER PROFILE
18400201	WALL UPPER PROFILE
18400202	WALL VERTICAL H-PROFILE

These profiles join and fix the semi-panels that line the walls of the pens with a perfect finish.



H-shaped profile: For joining semi-panels vertically and fixing them to the wall.

Two wall profiles: For joining the panel to the wall horizontally along the top and bottom.

The H-shaped profile and the upper profile also have an exclusive flaps system to absorb the expansion and contraction of the panels.



Upper semipanel profile.



Lower profile for semi panels.

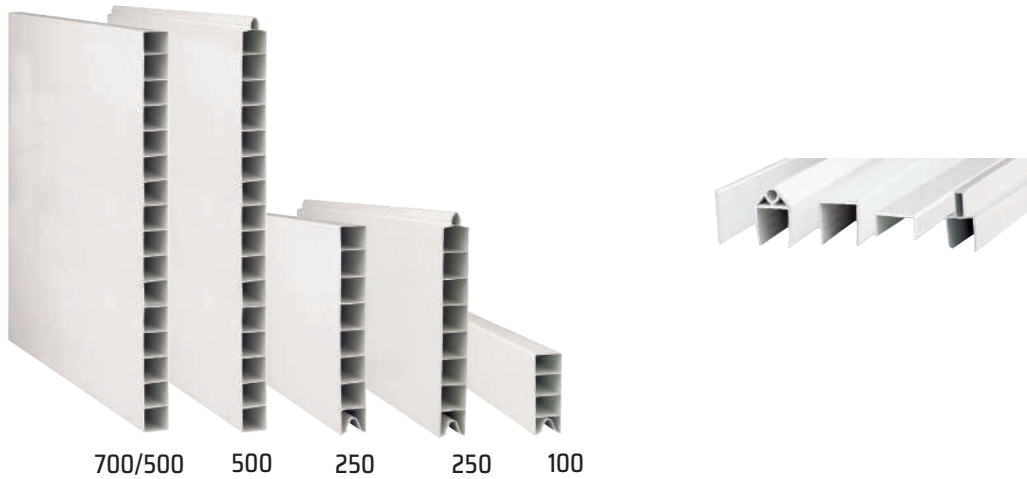


H-shaped semipanel profile.

35MM PVC PROFILE



PVC profiles are used to construct walls, partitions and pens for piglets in farrowing and transition.



MADE-TO-MEASURE PVC FENCE SYSTEM



Blind and ventilated PVC fences are used to build farrowing and transition pens for piglets.

The U-shaped ends of the profiles are finished with welded PVC with ultrasound for better hygiene, as the finish is designed to prevent dirt from gathering.

Modular made-to-measure system for easy installation and operation.

- Easy installation.
- Durability.



BRACKET SYSTEM FOR PVC FENCES



Bracket systems for PVC partition fences, suitable for farrowing and transition.



FAST LOCK BRACKETS



Pointed hook for easier closing.



Safety latch with spring.



Flared hinge brackets.



ADVANTAGES:

- Made entirely from stainless steel.
- Easy handling, it can be closed with just one hand.
- Safety latch to prevent opening.
- Great rigidity and resistance to breakage.
- Designed to prevent the accumulation of dirt.



SS U BRACKETS

500/700/750



Lock.



Double hinge.



Hook.



Wall.

FENCING ACCESSORIES

SOLIDGRIP	SOLID GRIP
13906000	PIPEBRACKET FOR PVC PLANKS



PIPE SUPPORT
for Ø 1" - 35 mm
FENCE



Practical and robust.



SOLID GRIP



Easy handling.

- For installation of metallic reinforcing pipes in pen partitions made with 35 mm PVC profiles.
- Handle for blind pen doors made with 35 mm PVC profile for easier handling.

CONICAL CHIMNEYS



TAL40	400mm LONG INDUCTION DUCT
TAL45	450mm LONG INDUCTION DUCT
TAL50	500mm LONG INDUCTION DUCT
TAL56	560mm LONG INDUCTION DUCT
TAL63	630mm LONG INDUCTION DUCT



PE Chimneys can be used in both natural and forced ventilation systems.

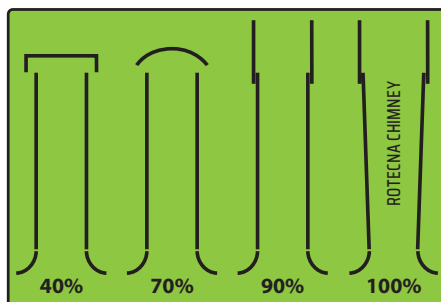
The cone-shaped chimney duct improves air extraction and significantly reduces transport costs.

ADVANTAGES:

- Better extraction.
- Available in different sizes.
- Stackable to save transport costs.
- Easy installation.



CHIMNEY PERFORMANCE



Without the lower cone, efficiency can be reduced by 5% to 10%.

CHIMNEY ACCESSORIES

TJD	UNIVERSAL CORRUGATED CHIMNEY ROOF SUPPORT
TJDP	UNIVERSAL FLAT CHIMNEY ROOF SUPPORT



Corrugated roof



Flat roof

SILOMETRIC

21000000 SILOMETRIC

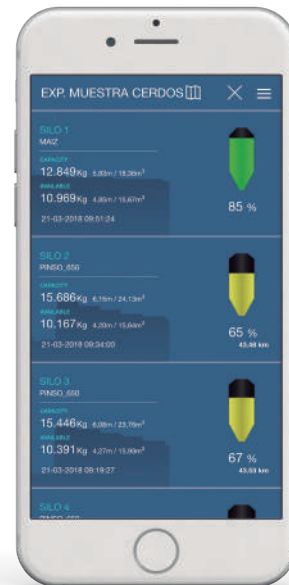
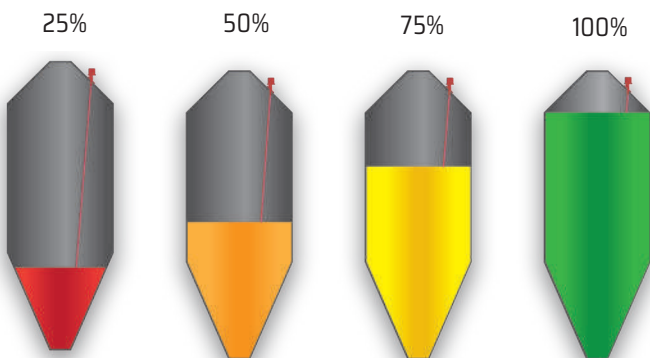


Wireless system to control silo capacity.

Silometric is a significant improvement for controlling feed stock since it can be done remotely and in real time, thereby optimizing transport and feed production logistics.

The system permits access to the data from any device connected to the internet via the cloud.

The system can be used to view historical data on silo content and to program warning signals.



Monitoring of feed level in real time.

ADVANTAGES:

- Laser reading.
- Low energy consumption system of cloud data transmission.
- Long-life battery.
- Wide coverage network.
- Option of Ethernet communication.
- Historical data.
- Programmable alarms.
- Economic.
- Wireless.
- Easy to install.
- Significant savings in logistics costs.
- 24-hour readings available without the need to check silos.

TECHNICAL DATA:

SILOMETRIC	
Measurement range	Up to 20 metres
Operating temperature	From -15° to +55°
Battery autonomy	Up to 8 years (readings every 2 hours)
Sensor	Laser
Measurement	Programmed every 2 hours. Customizable
Size	335x125x125 mm
Type of communication	Radiofrequency (*)
Installation	No need for cables or control units

(*) One unit must be installed per farm (500 m radius), when radio frequency is not available.

TECNAPUR SOLID LIQUID SEPARATOR

20500000	SEPARATOR T P-01 - 0,75 KW THREE-PHASE
20501000	SEPARATOR T P-01 - 0,75 KW SINGLE-PHASE
20502000	SEPARATOR T P-01 - WITHOUT MOTOR



Round ribs with a convex surface.

ADVANTAGES:

- Improves fertilizing properties of slurry.
- Reduces costs of application to fields as fertilizer.
- Easier transport and application of liquid phase.
- Separates up to 40% of total solids.
- Up to 20% of N and 50% of P and K go to solid phase.
- Reduction of up to 20% of the liquid volume.

Mechanical separation of liquid and solid phases of slurry.

The Tecnapur separator, built entirely with stainless steel, performs the three basic operations of filtering, pressing and scraping in a single unit.

It has a large filtering surface for treatment of up to 20 m³/hour (depending on the solids present) with consumption of less than 0.75 Kw/hour, meaning a major saving in energy costs.

The Tecnapur separator can work automatically and is designed to need very little maintenance and suffer very little wear.



SUBMERSIBLE TECNAPUR AGITATOR

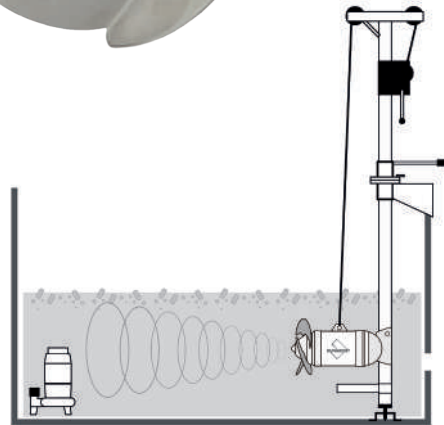
20500002	4 KW AGITATOR
20500003	LIFTING/TURNING SYSTEM SUPPORT

High speed slurry agitator.

Stirs sedimented solids in cesspools and pits so they are in suspension and can be pumped.

ADVANTAGES:

- Exclusive pointed design.
- Adjustable direction.
- Blades designed to prevent blockages and self-cleaning.
- Made with rust-proof materials.
- Optimal homogenization of slurry.
- High speed keeps even the largest particles in suspension.
- Low energy consumption.



Adjustable height submersible support.

SEPARATOR ACCESSORIES

SUBMERSIBLE PUMP with stainless steel protector.



Feeds the slurry separator from the reception chamber. The protection prevents jamming.

20500001	SUBMERSIBLE PUMP
----------	------------------

ELECTRICAL PANEL with agitator

20500005	ELECTRICAL PANEL WITH AGITATOR
20500006	ELECTRICAL PANEL WITHOUT AGITATOR



ELECTRICAL PANEL without agitator

FLOW METER



20500007	FLOW METER 2"
----------	---------------





ROTECNA, S.A.

Camí vell de Tàrrega, s/n - Polígon Industrial, nave nº3
25310 Agramunt (Lleida) SPAIN

Tel. +34 973 39 12 67 · Fax: +34 973 39 12 32

e-mail: rotecna@rotecna.com

www.rotecna.com

ROTECNAPRESS



issuu.com/rotecnapress

Official distributor:

